

**matki** | EAUZONE PLUS





# matki | EAUZONE PLUS

## EAUZONE PLUS

Elegance of form and outstanding functionality; EauZone Plus is the epitome of frameless luxury showering. Engineered characteristically with the striking grandeur of 10mm solid Safety Glass, minimal framing and beautifully finished details, EauZone Plus stands alone in supreme quality and styling.

EauZone Plus was conceived by Matki's in-house Design Team, with every Shower Enclosure, Panel and Bath Screen specially made to order on our site near Bristol. Decades of design expertise and manufacturing experience have gone into the collection and it has been rigorously tested to far exceed industry standards. Patents are held for key design features such as the superbly strong non-slip hinges and all EauZone Plus products are renowned for excellent, sustained performance.

Featuring a vast range of sizes and setups, EauZone Plus enables you to find the perfect fit for your bathroom. Beyond that, EauZone Plus Ultra Bespoke opens up even more possibilities, whether they be special sizes, special finishes or remarkably minimal framing options.

The choices truly are endless.

The Matki website features an online configuration tool and Ultra Bespoke section to help find the perfect EauZone Plus Shower Enclosure, Panel or Bath Screen. A Where-To-Buy Section can be used to locate your nearest approved Matki EauZone Plus Dealer where you can also view displays and discuss bathroom designs.



2

SLIDING ENCLOSURES



26

QUINTESSE ENCLOSURES



39

BATH SCREENS





6

CURVED ENCLOSURES



10

HINGED ENCLOSURES



28

RADIUS 20



31

WET ROOM PANELS



42

ULTRA BESPOKE



94

SHOWER TRAYS







## SLIDING DOOR FOR CORNER

### INNOVATIVE SLIDING TECHNOLOGY

Raising the standard, solid 10mm sliding doors run on high strength, whisper quiet rollers enabling a smooth sliding action, secured inside a mirror polished Stainless Steel Top Track. Reassuring strength with a contemporary look.

Providing a lasting quality, the unique strength of the door has been tested to over 150,000 open and close cycles across all EauZone Plus Slider products, equivalent to over 100 years of use.

See page 58 for Sizes, Prices and Specification.

### THREE SIDED OPTION



EPST1700 with EPSC900SP

EPSC1700 + EPSC900SP



## SLIDING DOOR FOR RECESS

For Recess, the EauZone Plus Sliding Door provides a luxurious balanced design. Minimal lines and mirror polished framing make a quiet statement. Engineered with reassurance, high-quality roller mechanisms ensure a perfectly smooth action.

See page 60 for Sizes, Prices and Specification.















## CURVED CORNER

### A DESIGN FIRST

Uniquely, every panel including the door of the EauZone Plus Curved Corner is engineered from 10mm glass, an impressive testament to the unit's strength and durability and a complete first in Curved Shower Enclosure design.

Taking inspiration from the successful EauZone Plus Slider, the Curved Corner is built from the same high performing materials with a Stainless Steel top track and intricately shaped inner tracks, allowing for a superbly smooth opening movement.

See page 62 for Sizes, Prices and Specification.



ECS900









## NATURAL CURVE APPEAL

Designed upon a carefully considered proportion, the EauZone Plus Curved makes an elegant statement, opening up floor space in the most beautiful way.

Softening on the eye, the curvaceous profile offsets angular profiles sitting in harmony within any style bathroom environment whilst working beautifully with other curved fixtures and fittings.

See page 62 for Sizes, Prices and Specification.

## HINGED DOOR WITH HINGE PANEL AND INLINE PANEL FOR CORNER

The Hinged Door with Hinge Panel and Inline Panel for Corner is a luxurious solution with a symmetrical look, perfect for large bathroom spaces.

See page 66 for Sizes, Prices and Specification.

### CHOICE AS STANDARD

The EauZone Plus Hinged Collection has a vast selection of standard sizes and panel combinations, making luxurious showering a possibility for any shape or size bathroom. For specialist projects, EauZone Plus Bespoke and Ultra Bespoke offer made-to-measure size and shape glass and framing options.

### PATENTED 'ANTI-SLIP' HINGING SYSTEM

Regardless of size, glass is held in the exact position by the patented Matki EauZone Plus anti-slip hinges promising perfect door adjustment and a secure fixing.













## HINGED DOOR WITH HINGE PANEL AND INLINE PANEL FOR RECESS

Having an overall balanced look, the Hinged Door with Hinge Panel and Inline Panel for Recess is beautifully luxurious to behold and a delight to use. A stylish option for creating larger recessed showering spaces.

See page 74 for Sizes, Prices and Specification.

## DISTINCTIVE BRUSHED NICKEL

Perfect for modern and industrial styles or for a new take on traditional, the EauZone Plus Brushed Nickel finish will blend well with other Brushed Nickel and unpolished Stainless Steel finishes in the bathroom. This unique tone makes a quiet yet distinctive design impression.

See page 55 for more details on Special Finishes.



## HINGED DOOR WITH HINGE PANEL FOR CORNER

With a vast selection of standard sizes, the EauZone Plus Hinged Door with Hinge Panel for Corner is a luxurious option for any bathroom space. Special panel configurations can be specified from a selection of standard sizes to accommodate furniture and obstructions.

See page 64 for Sizes, Prices and Specification.

## SPECIAL GLASS FINISHES

Many EauZone Plus Enclosures and Screens are available in Special Glass Finishes. There is a choice of Standard Clear Glass, Tinted Glass in a number of colours, Ultra Clear Low Iron, Satin/Frosted and the new Ultra Black Glass. Ultra Black and Satin/Frosted Glass finishes are ideal for use with privacy doors and panels.

See page 51 for more details on Special Glass Finishes.



Hinged Door with Hinge Panel for Corner with Cut-Out for over bath solution, see page 42 for bespoke specifications.

EPHC1200 + EPHC900SP WITH LOW IRON GLASS













## HINGED DOOR WITH HINGE PANEL FOR RECESS

The EauZone Plus Hinged Door with Hinge Panel for Recess has a vast selection of standard sizes, making it a luxurious option for fitting elegant showering spaces into smaller and larger recessed areas.

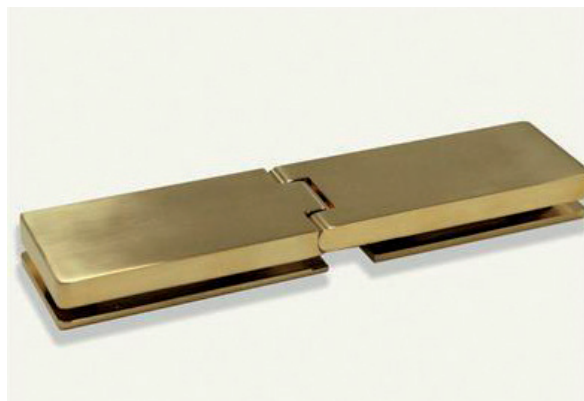
See page 72 for Sizes, Prices and Specification.

## INDULGE IN BRUSHED GOLD

Brushed Gold finish for EauZone Plus is captivatingly warm, calming the opulence of Gold with a luxurious depth and texture.

Designed to complement Brushed Gold finishes of the highest quality, Brassware and furniture can be matched to suit sumptuous design schemes.

See page 55 for more details on Special Finishes.



EPH1200 WITH BRUSHED GOLD FINISH



## HINGED DOOR WITH INLINE PANEL FOR CORNER

Exquisitely proportioned, the Hinged Door with Inline Panel for Corner is available in a range of sizes, accommodating a left or right hand corner.

See page 68 for Sizes, Prices and Specification.

### CHOOSE YOUR HANDLE

All EauZone Plus Shower Doors and Enclosures are available with a choice of handles, making sure every element of the showering space is in keeping with the wider bathroom scheme.

The Linear Hardwood Handle made from treated Teak Hardwood adds an authentic natural style.

See page 52 for more details on EauZone Plus Handle options.



Linear Hardwood Handle













## HINGED DOOR AND INLINE PANEL FOR RECESS

A popular configuration for Recess, the Hinged Door with Inline Panel for Recess can be ordered from a range of panel configurations to accommodate furniture and obstructions.

See page 76 for Sizes, Prices and Specification.

## THE PREFERENCE SHOWER TRAY

The Preference Shower Tray suits the contemporary style of the EauZone Plus collection, matching perfectly in looks and function.

Made from a special Matki solid surface formula rich in ground marble, the semi-matt surface finish of the Preference is warm to the touch and easy to clean and maintain.

See page 99 for Sizes, Prices and Specification.



## HINGED DOOR FOR CORNER

The 10mm Solid Safety Glass door is hinged from the wall and closes perfectly onto the Side Panel to provide the ideal corner solution.

Page 70 for Sizes, Prices and Specification.

## BESPOKE FRAMING OPTIONS

For EauZone Plus Hinged, there is a possibility to choose from standard 28mm framing, 11mm minimal framing, recessed framing or no frame at all. Minimal framing extends the contemporary feel of EauZone Plus; recessed framing has a luxurious appeal; creating a feel of complete openness with superb water retention. Measure and Installation is required by Matki Installations for minimal, recessed and no frame options.

See page 46 for EauZone Plus Bespoke Wall Frame options.













## HINGED DOOR FOR RECESS

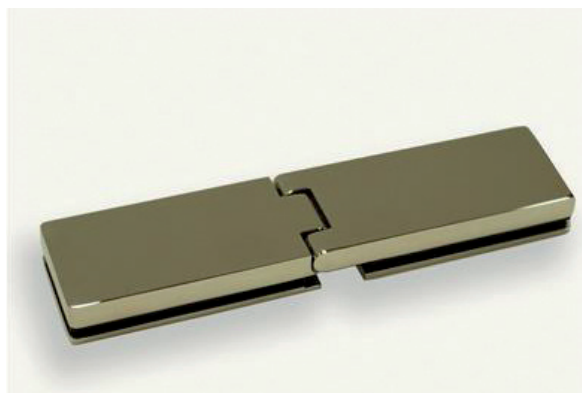
For smaller Recessed showering spaces, the Hinged Door for Recess starts at a width of 700mm, providing a neat recess situation.

Page 78 for Sizes, Prices and Specification.

## BRIGHT POLISHED NICKEL

Polished Nickel brings a subtle touch of elegance and a refined luxury to the bathroom. In classical schemes, the EauZone Plus Traditional Handle and Towel Rail completes the scheme superbly in the Polished Nickel finish.

See page 55 for more details on Special Finishes.



EPR900 WITH POLISHED NICKEL FINISH



## QUINTESSE

A true centrepiece. With a structured design and clean minimal lines, the EauZone Plus Quintesse offers a unique solution to fitting a luxurious Corner Shower Enclosure.

See page 80 for Sizes, Prices and Specification.

### QUINTESSE SHOWER TRAYS

Matki Quintesse Shower Trays are perfectly suited to the EauZone Plus Quintesse, providing a stunning foundation for this unique showering space.

See page 103 for more details on Quintesse Shower Trays.













## RADIUS - 20 ENCLOSURES

In a class of its own, the new EauZone Plus Hinge Panel and Door with Radius-20 Side Panel represents the pinnacle of frameless shower design. The visual allure of the expertly curved Radius-20 Side Panel combined with the refined proportions and steadfast reliability of the EauZone Plus Hinged Door design achieves a synthesis with its own distinct character and unique elegance.

Available with or without a Hinge Panel in sizes from 900 up to 1600. Please see pages 88 and 89 for more details on Sizes, Prices and Specification.



EWCL900 + EWL900SP

EHCL1200 + EWL900SP









## RADIUS - 20 WET ROOM PANEL

Unparalleled, distinctive and completely unique, the Radius-20 is engineered from a single sheet of 10mm glass, expertly curved to achieve a softened, fluid edge with a tight 20mm inner radius. Both contemporary and practical, the panel offers a return for extra splash protection, whilst avoiding the need for UV bonds and aluminium corner profiles.

The Radius-20 is available to order with a specially designed solid surface, Matki Preference Tray (EWLT) pictured, with additional base support to match the unique shape of the panel.

See page 87 for Sizes, Prices and Specification.



EWL1000 AND EWP900 WET ROOM PANELS ON EWLT PREFERENCE TRAY



More than just a pane of glass.

The Matki EauZone Plus 10mm and 12mm Glass Wet Room Panels use specially polished Stainless Steel Wall Profiles for a superior finish.

Granting a look of absolute elegance, each panel is completely frameless at the base and sizes up to 1200mm do not require a Brace Bar due to the enhanced structural integrity of the Wall Profile and solid Brass Wall Bracket.

Tested beyond industry standards for endurance and stability – and assured with Matki's meaningful guarantee.

See pages 84-86 for Sizes, Prices and Specification.



EWP1000











## 10MM WET ROOM PANEL WITH HINGED PANEL

A luxurious Wet Room Panel solution complete with Hinged Panel, for added flexibility and protection against splash and spray.

All models feature a discreet watertight sealing system, which minimises the seal size whilst achieving 100% water retention at the panel join, regardless of the hinge panel position.

This model can be installed on to tiles or a Wet Room floor, and is available with an integrated Shower Tray meaning no silicone is visible along the base of the panel.

See page 90 for Sizes, Prices and Specification.



Panel hinge with unique glass edge water seal

EWH1590





Secure adjustable Brace Bar

## TWIN ENTRANCE WET ROOM PANEL

Granting a completely open showering space, the Twin Entrance Wet Room Panel brings a chic feel to any bathroom.

Built from 10mm glass, the panel has a precise and stunning profile and added security with Stainless Steel Brace Bars. This panel can be fitted directly onto tiles or with a Shower Tray or Floor.

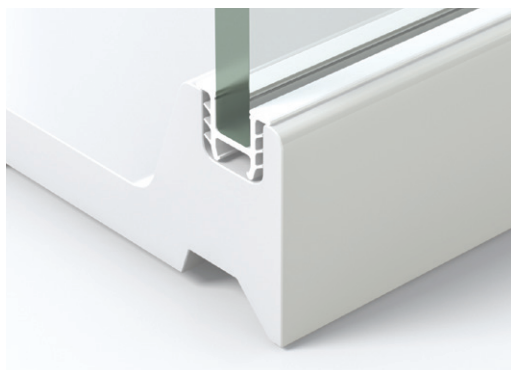
See page 81 for Sizes, Prices and Specification.

## 10MM WET ROOM PANEL WITH TRAY

Solid glass is tightly secured in an innovative channel built into the 50mm ultra slim tray, eliminating the need for Silicone sealant.

The channel offers a rigid, easy to clean watertight installation with a modern seamless appearance.

See page 84 for Sizes, Prices and Specification.



Glass channel in Wet Room Panel tray.



EWB1590











## EAUZONE PLUS BATH SCREENS

EauZone Plus Bath Screens offer a luxurious water-tight solution for over-bath showering with single, two panel and folding options presented for flat top baths.

Built exclusively from robust 10mm glass they share a stylish aesthetic with excellent function.

See page 92 for Sizes, Prices and Specification.

### DOUBLE PANEL BATH SCREEN

The Double Panel Bath Screen offers an attractive, symmetrical look and has a convenient function with the hinged panel folding away when using the bath for bathing.

See page 92 for Sizes, Prices and Specification.



## BATH SCREENS



Above: Single 10mm EauZone Plus Hinged Bath Screen.  
Simple and beautiful. Shown without wall frames, see page 92.

Opposite: The new EauZone Plus Two Panel Bath Screen.  
The solid 10mm Safety Glass is securely hinged from the hinge panel  
for extra length. Also available in Bespoke sizes.











## BESPOKE SOLUTIONS

Contemporary shower design and beautiful luxury in the bathroom is no longer limited to standard shapes and sizes. The Matki EauZone Plus Ultra Bespoke collection offers countless possibilities for even the most challenging of spaces.

Whether you are working on installing a showering space into a loft conversion, want to increase the height up to the ceiling or would like to fit a Shower Enclosure over a dwarf wall or around the end of a bath, Matki can work with you to formulate a design that is tailored to your exact requirement and preferences.

The possibilities are truly endless.

## BESPOKE STATEMENTS

The Matki EauZone Plus Ultra Bespoke collection brings together the elegant styling and technical prowess of EauZone Plus with the tailored flexibility of Bespoke-made design.

Keeping pace with the imagination, Ultra Bespoke does not start and end with technical planning. Matki go beyond that by paying attention to even the finest detail to achieve a stunning feature aesthetic, which we help you define with choices of handles, glass shapes and sizes, glass finishes, metal finishes and framing systems.

## PLANNING A BESPOKE PROJECT

On the following pages you will find comprehensive, technical listings of all the available options, configurations and details on ordering EauZone Plus Ultra Bespoke.

For more information, please find your nearest EauZone Plus showroom at [www.matki.co.uk](http://www.matki.co.uk).



2



3



4

1. Black Tinted Glass with Angled Glass Cut and minimal frames for sloping wall installation, The Bathroom Co.
2. Increased Height Three-Sided Slider, Kuche & Bagno.
3. Over bath solution using Dwarf Wall technique, CP Hart.
4. Brushed Gold with Framed Top Panel for increased height, CP Hart.

Installations were carried out by Matki Installations and designs by Matki EauZone Plus Dealers - for more information visit [www.matki.co.uk](http://www.matki.co.uk).



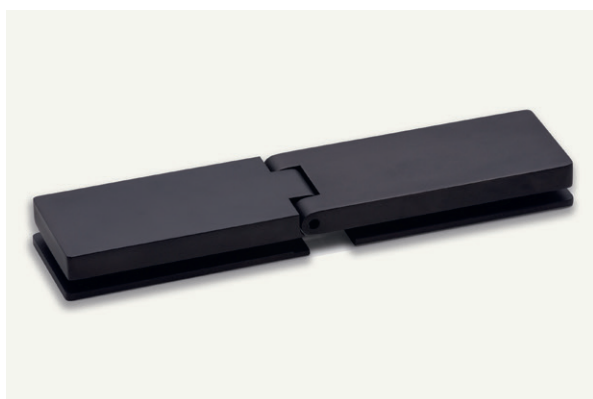
## ULTRA BESPOKE MATT BLACK

EauZone Plus Ultra Bespoke is now available to order in an elegant and absolute Matt Black.

Using marine grade industrial coating, more hardwearing than powder coating, Matt Black is luxuriously bold.

EauZone Plus brings Matt Black out of fashion and into style.

See page 55 for more details on Special Finishes.



Matt Black Hinge

EPI1700 ULTRA BESPOKE WITH MATT BLACK FINISH AND LOW IRON GLASS





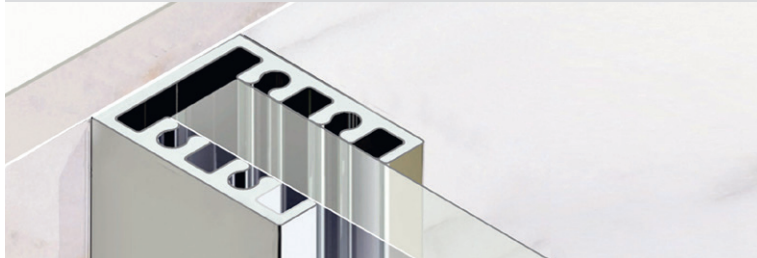




## WALL FRAMES

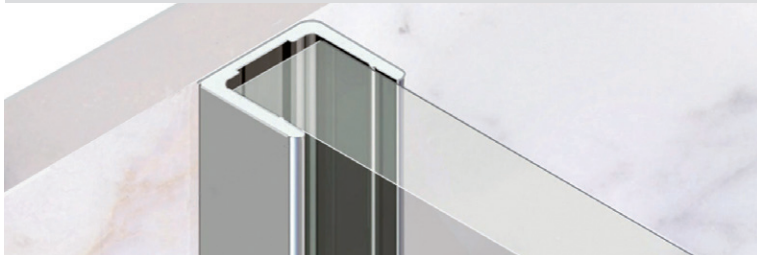
A choice of four framing options is available in EauZone Plus Bespoke. Please see the Bespoke detail pages for availability on individual models.

### STANDARD WALL FRAME



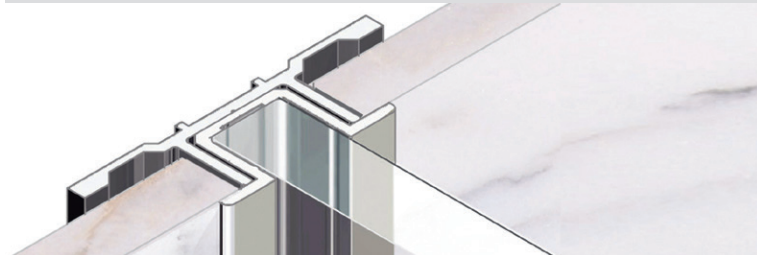
■ Sleek 28mm highly polished Aluminium profile allowing for some adjustment of glass when confronted with out of plumb walls.

### MINIMAL WALL FRAME



■ Minimal 11mm Wall Mounted profile giving an almost frameless look. Measure and Installation required.

### RECESSED WALL FRAME



■ Comprising a first fix section to be fitted prior to tiling and a neat cover profile. The recessed channels achieve a frameless look alongside the practicality and the water retention of a standard frame. Measure and Installation required.

### NO WALL FRAME



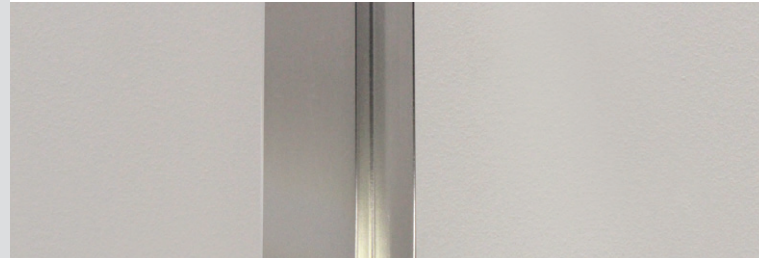
■ Completely Frameless, this option uses an expertly applied bead of high grade silicone between the glass and wall. Measure and Installation required.

See bespoke section on the Matki website for more information [www.matki.co.uk](http://www.matki.co.uk).

## FRAME FINISHES

The high lustre Aluminium frames used in EauZone Plus come in four finishes. Please see product detail pages for availability on individual models.

### SILVER FRAME



■ Aluminium in a silver finish for all frames on EauZone Plus Hinged, Quintesse and Bath Screens.

### NICKEL FRAME



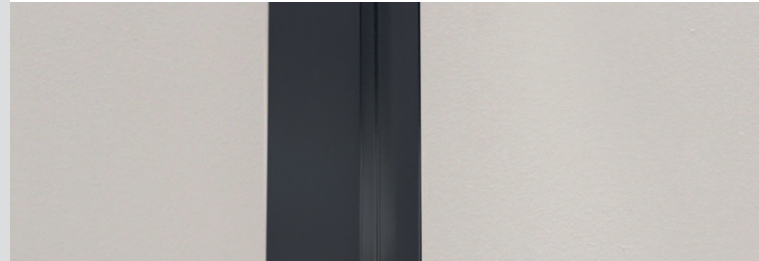
■ Aluminium in a Nickel finish available for all frames on EauZone Plus Hinged, Quintesse and Bath Screens. The same Nickel finish frame is used for Polished and Brushed Nickel options.

### GOLD FRAME



■ Aluminium in a Gold finish available for all frames on EauZone Plus Hinged, Quintesse and Bath Screens. The same Gold finish frame is used for Gold and Brushed Gold options.

### MATT BLACK FRAME



■ Aluminium in a Matt Black finish available for Minimal Frames and Recessed Channels only, on Bespoke EauZone Plus Hinged Enclosures and Wet Room Panels. See product specification pages for availability.

Finishes on Aluminium parts will vary from those on Brass and Stainless Steel parts due to material properties and different lighting conditions. We advise viewing samples with your nearest Matki EauZone Plus Dealer.





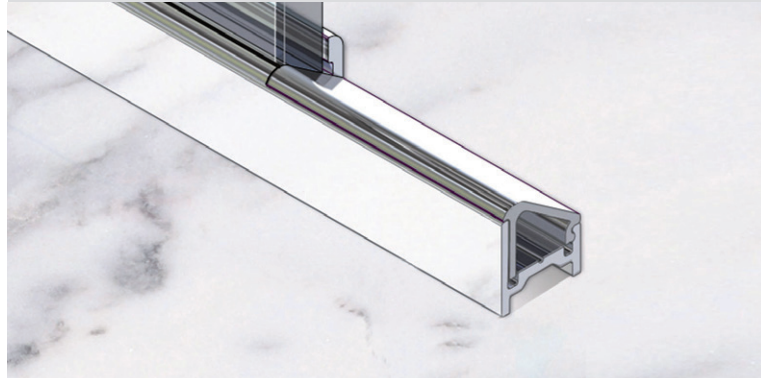
# ULTRA BESPOKE OPTIONS

47

FRAME FINISHES SEE OPPOSITE PAGE

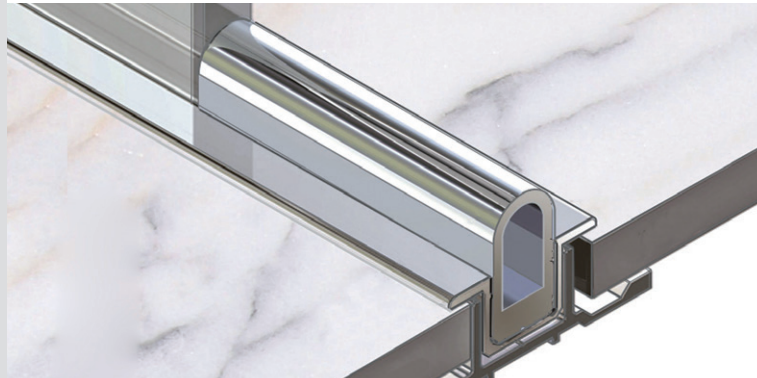


#### STANDARD THRESHOLD



■ The standard threshold used across the EauZone Plus Collection is beautifully engineered to create a stylish barrier with excellent water retention.

#### RECESSED FLOOR CHANNEL WITH RAISED INFILL



■ The raised infill is a neat addition to a recessed channel threshold and can be retrofitted if required.

#### FRAMELESS THRESHOLD



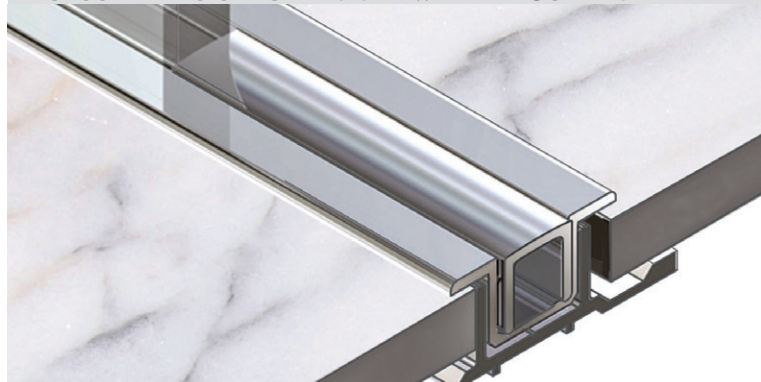
■ One option with Bespoke is to have no threshold section. This provides a clean, minimal appearance to the enclosure entry.

#### RECESSED FLOOR CHANNEL WITH RETRO FIT BAR



■ Bespoke length profile which can be retrofitted to a tiled threshold if required.

#### RECESSED FLOOR CHANNEL WITH FLUSH INFILL



■ Comprising a first fix section to be fitted prior to tiling and a neat cover profile measuring 25mm across and 1.5mm deep. The neat flush Chrome infill interacts with a special door seal to give spray protection. Measure and Installation required. Available in choice of finishes.



# DWARF WALLS

DWARF WALL FRAME WITH 90° FRAME CONNECTOR



■ Smoothly finished Brass frame connector for a distinct and precise 90° joint between Aluminium frame sections.

DWARF WALL FRAME WITH 90° EDGE CONNECTOR.



■ Off-set Brass connector to form joint between side panel and inline panel frame sections on EPIC or EPWC models. This allows for a dwarf wall to come out in line with the front of the enclosure.

DWARF WALL FRAME WITH 90° CONNECTORS



- Vertical and horizontal Brass frame connector.
- Combination of frame connectors to allow wider seat or shelf area.
- Recessed Channel, Minimal Frame or No Wall Frame options can also be chosen for dwarf wall setups.

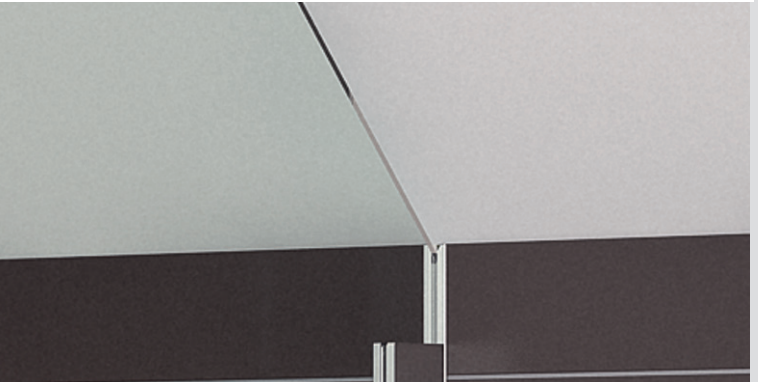
# ANGLED CUTS

FRAMED ANGLED CUT



■ Accurate angle cut in the glass to fit exact dimensions and using a choice of frames to fill gap between glass and wall.

FRAMELESS ANGLED CUT



■ Accurate angle cut in the glass to fit exact dimensions with no frame.



50

ACCESSORIES

LINEAR TOWEL RAIL\*



- LTR400D, LTR700D - Linear Towel Rail for Doors, with Pull Handle on inside.
- LTR400P, LTR700P, LTR1000P - Linear Towel Rail for Fixed Panels, outer rail only.
- 1000 has additional centre fixing.

TRADITIONAL TOWEL RAIL\*



- TTRDS - Double-sided Traditional Towel Rail. Can be ordered in sizes up to 735mm.
- Single sided available on request.

SEAT\*



- Strong and durable integrated shower seat.

\* Bespoke glass surcharges may apply

LINEAR HARDWOOD TOWEL RAIL\*



- LWT400D, LWT700D - Linear Hardwood Towel Rail for Doors, with Pull Handle on inside.
- LWT400P, LWT700P, LWT1000P - Linear Hardwood Towel Rail for Fixed Panels, outer rail only.
- 1000 has additional centre fixing.

CURVED TOWEL RAIL\*



- CTRDS - Double-sided Towel Rail. 700mm.
- Single sided available on request.

PRICES

MODEL	PRICE (EX. VAT)	PRICE (INC. VAT)
LTR400D, LWT400D	£172.00	£206.40
LTR700D, LWT700D	£251.00	£301.20
LTR400P, LWT400P	£157.00	£188.40
LTR700P, LWT700P	£235.00	£282.00
LTR1000P, LWT1000P	£314.00	£376.80
TTRDS, CTRDS	£350.00	£420.00
SEAT	£140.00	£168.00

\*All towel rails and seats are purely for purchase with Matki glass.

Above prices do not include surcharges for Bespoke glass required for towel rails and seat. Please see relevant Bespoke page 58-93.

The Curved Towel Rail, Traditional Towel Rail and 700 sizes of the Linear and Linear Hardwood Rails can be used on the EWT 12mm Wet Room Panel see page 86. Please use the RAIL code and state choice on order.

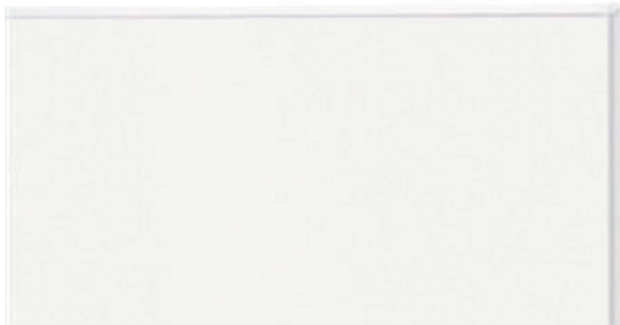


# GLASS FINISHES

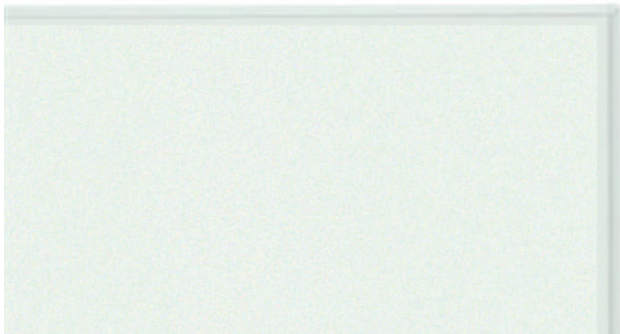
STANDARD CLEAR GLASS



ULTRA CLEAR LOW IRON GLASS



FROSTED/SATIN GLASS



BLACK TINTED GLASS



For special glass finish surcharges please see relevant model page 58-93.

BLUE TINTED GLASS



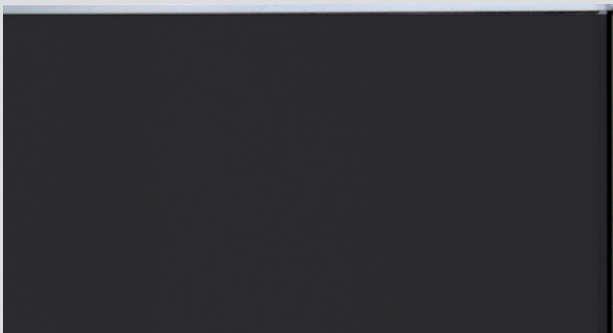
GREEN TINTED GLASS



BRONZE TINTED GLASS



ULTRA BLACK GLASS





52 | HANDLES

LINEAR



LINEAR HARDWOOD



TRADITIONAL



CURVED



GLASS BALL\*



CIRCULAR CUT OUT IN GLASS\*



\*Bespoke glass surcharges may apply



# WALL BRACKETS

STANDARD L-SHAPED BRACKET



■ Solid Brass L-Shaped Bracket for securing the glass to the wall. Fitted on top of fixed panels for all frame types.

WALL BRACKET FOR 28MM FRAMES



■ This solid Brass Bracket is specifically for use with the 28mm standard frame where the standard L-Shaped Bracket cannot be used due to length or width restrictions or angled ceilings. Its footprint on the wall is no wider than the standard frame.

WALL BRACKET WITH 11MM MINIMAL WALL FRAMES



■ This solid Brass Bracket is specifically for use with the 11mm minimal frame where the standard L-Shaped Bracket cannot be used due to length or width restrictions or angled ceilings.

WALL BRACKET WITH RECESSED FRAMES



■ This solid Brass Bracket is specifically for use with recessed channels, where the standard L-Shaped Bracket cannot be used due to length or width restrictions or angled ceilings.



#### STANDARD WALL MOUNTED HINGE



■ Outward opening hinge. Available in a choice of finishes.

#### STANDARD PANEL MOUNTED HINGE



■ Outward opening hinge. Available in a choice of finishes.

#### WALL MOUNTED HINGE



■ Outward opening hinge for use with Ultra Bespoke frame types. This hinge requires Bespoke door glass and Measure and Installation. Available in a choice of finishes.

#### WALL MOUNTED HINGE - INWARD OPENING



■ Inward opening hinge for use with Ultra Bespoke frame types. This hinge requires Bespoke door glass and Measure and Installation.

#### PANEL MOUNTED HINGE - INWARD OPENING



■ Inward opening hinge for use with all frame types. Available in a choice of finishes.





POLISHED CHROME



POLISHED NICKEL



BRUSHED NICKEL



GOLD



BRUSHED GOLD



MATT BLACK

Finishes on Brass parts will vary from those on Aluminium and Stainless Steel parts due to material properties and different lighting conditions. We advise viewing samples with your nearest Matki EauZone Plus Dealer.





## MATKI INSTALLATIONS

Precise, efficient and hassle-free, Matki Installations is our in-house expert fitting team.

Throughout the United Kingdom and abroad, Matki Installations offer Measure and Installation Services for Standard and Bespoke EauZone Plus Shower Doors and Screens.

For Bespoke, there will normally be only two visits, first to measure and then to install. Matki Installations should be used for all frameless, recessed-channel and minimal framed units. For Bespoke units with standard frames, the service is optional. Prices for Measure and Install of Bespoke Shower Doors and Screens can be found at the bottom of the right hand Bespoke pages 59–93.

An installation service is now also available for standard EauZone Plus Shower Doors and Screens to offer expert fitting and extra peace of mind. Prices for Installation of Standard Shower Doors and Screens can be found in the How to Order section on the left hand Standard pages 58–92.

For Standard and Bespoke units, Matki Installations will bring the product with them on the day of installation. Once fitted, they will ensure the Shower Door or Screen and surrounding area are given a good clean and they will then take all the packaging away with them to recycle.

All EauZone Plus units installed by Matki Installations benefit from an extended 15 year guarantee with the initial 3 year period also having labour cost cover. Please register your guarantee on the Matki website with the details provided.

To book Matki Installations please contact our Bespoke Department on [eauzonebespoke@matki.co.uk](mailto:eauzonebespoke@matki.co.uk) or 01454 322888.

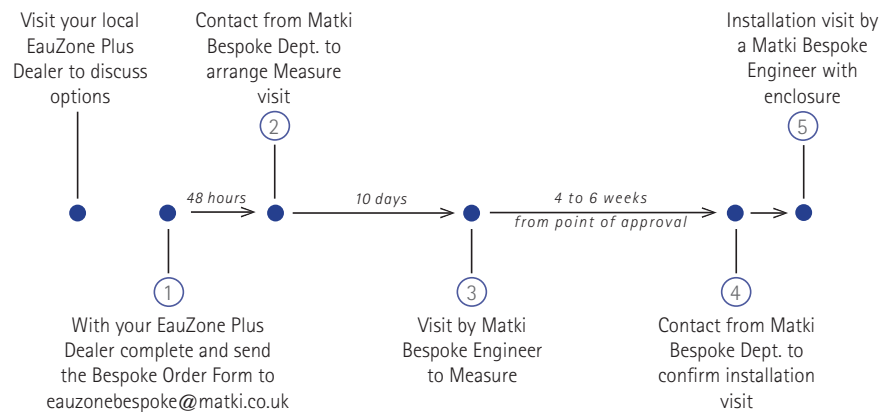
Prior to the Matki Installations visit, please ensure the shower area is ready with tiling finished and is fully accessible, and please advise us of any access or parking restrictions. We ask that the homeowner or responsible person, authorised to sign off the work, is at home for the duration of the visit. Any revisits required if the area is not ready and accessible or the homeowner/responsible person is absent are chargeable.

For Matki Installations services outside the UK mainland, please contact Matki for pricing and availability.



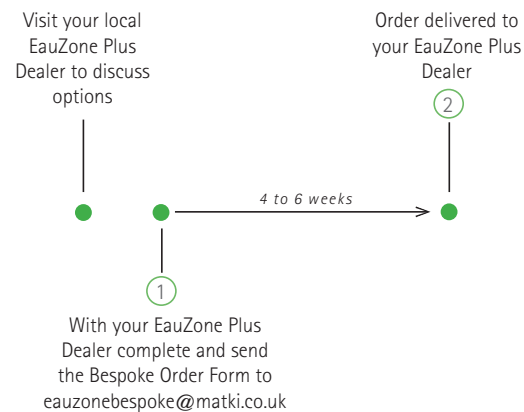
# BESPOKE ORDER TIMELINE

## WITH MEASURE & INSTALLATION:



- From start to finish Matki Bespoke Measure and Installation will take approximately 6 - 8 weeks

## WITHOUT MEASURE & INSTALLATION:



### PLEASE NOTE:

- All time periods stated are estimated and can vary dependent on customer approval
- For recessed channels - first fix channels delivered out prior to Measure to be fitted by your installer/tiler prior to tiling. Measure and Install service only
- Measure only and Install only options also available



For Bespoke pricing and sizing options please see individual product pages (58-93)



SLIDING DOOR WITH FIXED PANELS  
AND SIDE PANEL FOR CORNER AND  
THREE SIDED

- FEATURES
- 10mm Clear Safety Glass (EN12150-1)
  - Elegant and strong mirror-polished Stainless Steel top track and wall profiles
  - Soft-closure mechanisms and shaped track inners for extra smooth action
  - EauZone Plus can be fitted onto a shower tray, shower floor or directly on to a waterproof tiled floor
  - Matki Glass Guard Easy Clean Protection included in price
  - Three sided option available

- HOW TO ORDER
- Visit a Matki EauZone Plus Dealer to view displays and discuss models
  - An EauZone Plus Configurator Tool is available on the Matki Website
  - Installation by Matki Installations £650 ex VAT for EPSC; £725 ex VAT for EPST; see pages 56-57

- FINISH
- Chrome/Mirror Polished Stainless Steel; For Brushed Steel, Polished Nickel and Gold add £425.00, £450.00 for EPST ex VAT
  - Standard Clear Glass; Available on models with C panel size 181 upwards, for all tinted colours add £1,335.00 ex VAT for EPSC (EPST + £375 ex VAT), for Low-Iron, Satin Frosted and Ultra Black add £1,525.00 ex VAT for EPSC (EPST + £610 ex VAT)

DIMENSIONS (MM)					PRICES	
MODEL CORNER / 3-SIDED DOOR	A	B	C	D	PRICE (EX. VAT)	PRICE (INC. VAT)
EPSC1200	1172-1187	465	56	523-543	£1,357.00	£1,628.40
EPSC1225	1197-1212	465	81	523-543	£1,547.00	£1,856.40
EPSC1250	1222-1237	465	106	523-543	£1,547.00	£1,856.40
EPSC1275	1247-1262	465	131	523-543	£1,547.00	£1,856.40
EPSC1300	1272-1287	465	156	523-543	£1,547.00	£1,856.40
EPSC1325	1297-1312	465	181	523-543	£1,553.00	£1,863.60
EPSC1350	1322-1337	465	206	523-543	£1,553.00	£1,863.60
EPSC1375	1347-1362	465	231	523-543	£1,553.00	£1,863.60
EPSC1400	1372-1387	465	256	523-543	£1,553.00	£1,863.60
EPSC1425	1397-1412	465	281	523-543	£1,566.00	£1,879.20
EPSC1450	1422-1437	465	306	523-543	£1,566.00	£1,879.20
EPSC1475	1447-1462	465	331	523-543	£1,566.00	£1,879.20
EPSC1500	1472-1487	610	56	678-693	£1,566.00	£1,879.20
EPSC1525	1497-1512	610	81	678-693	£1,622.00	£1,946.40
EPSC1550	1522-1537	610	106	678-693	£1,622.00	£1,946.40
EPSC1575	1547-1562	610	131	678-693	£1,622.00	£1,946.40
EPSC1600	1572-1587	610	156	678-693	£1,622.00	£1,946.40
EPSC1625	1597-1612	610	181	678-693	£1,699.00	£2,038.80
EPSC1650	1622-1637	610	206	678-693	£1,699.00	£2,038.80
EPSC1675	1647-1662	610	231	678-693	£1,699.00	£2,038.80
EPSC1700	1672-1687	610	256	678-693	£1,699.00	£2,038.80
EPSC1725	1697-1712	610	281	678-693	£1,762.00	£2,114.40
EPSC1750	1722-1737	610	306	678-693	£1,762.00	£2,114.40
EPSC1775	1747-1762	610	331	678-693	£1,762.00	£2,114.40
EPSC1800	1772-1787	610	356	678-693	£1,762.00	£2,114.40

For Three Sided Option use Prefix EPST instead of EPSC and add Side Panels  
Use EPSC prices plus Side Panels. Please specify RH or LH Opening



CONFIGURATIONS

LH CORNER

RH CORNER

LH OPENING

RH OPENING

HANDLE OPTIONS:

Linear

Linear Hardwood

Curved

Traditional

Single Straight

Linear handle will be supplied if not otherwise specified

DIMENSIONS (MM) PRICES			
SIDE PANEL	E	PRICE (EX. VAT)	PRICE (INC. VAT)
EPSC700SP	671 – 686	£417.00	£500.40
EPSC760SP	731 – 746	£448.00	£537.60
EPSC800SP	771 – 786	£480.00	£576.00
EPSC900SP	871 – 886	£542.00	£650.40
EPSC1000SP	971 – 986	£617.00	£740.40
Reverse EPSC option available with door closing towards wall side. Please state REVERSE on order			
For Three Sided Option use above Side Panel Codes and Prices			
Due to EPST being a Three Sided enclosure, there is no adjustment within unit. Please add 3mm on to max adjustment or column A for overall width on EPST			



HOW TO ORDER

- Review the Bespoke section (page 42-57) and discuss options with a Matki EauZone Plus Dealer
- Please see the Bespoke Order Timeline on page 57 for a guide on the Bespoke process
- Use Codes and Surcharges below for order and pricing
- For more details and inspiration visit the Bespoke section of the Matki website at [www.matki.co.uk](http://www.matki.co.uk)
- Our Bespoke Department can be contacted on [eauzonebespoke@matki.co.uk](mailto:eauzonebespoke@matki.co.uk) or 01454 322888



1. BESPOKE BASE SURCHARGES




- For all Bespoke, use standard price of next nearest EPSC model and/or EPSC\_SP Side Panel model, add Bespoke Base Surcharge first, then other surcharges
- For width changes within maximum standard sizes stated on the opposite page, add Base Surcharges only. For outsize widths please contact Matki
- For Front of Enclosure, add surcharge and suffix codes to standard, e.g. EPSC1200BCD. For Side Panel, do the same, e.g. EPSC900SPE
- For EPST add two Bespoke Side Panels if applicable

2. EPSC HEIGHT CHANGES AND SIDE PANEL SHAPING

- For front of Enclosure, Bespoke increased height changes are available excluding EPSC1200 to EPSC1300
- Increased Height up to 2200mm\*
- Reduced Height is covered by the Base Surcharge. On models EPSC1200, EPSC1225, EPSC1250, reduced height can be ordered at 1800mm, 1850mm, 1900mm and 1950mm
- For Side Panel, height changes as well as cut outs and angles available, e.g. EPSC900SPEXH denotes a cut out and increased height
- Add surcharges and suffix codes per panel to Bespoke Base, e.g. EPSC1200HHH

BESPOKE DOOR	BESPOKE INLINE PANEL	BESPOKE FIXED PANEL	BESPOKE SIDE PANEL
			
£275 Code Suffix: B	£250 Code Suffix: D	£250 Code Suffix: C	£275 Code Suffix: E

All prices exclude VAT

CUT-OUT (Side Panel Only)	ANGLE (Side Panel Only)	INCREASED HEIGHT*
		
£120 Code Suffix: X	£90 Code Suffix: Y	£60 Code Suffix: H

\*Beyond 2200mm, please contact Matki

3. SPECIAL GLASS FINISHES - BESPOKE ONLY

- For Special Glass Finishes please add the below surcharge per enclosure to the totals of the standard unit + Section 1 Bespoke Base Surcharge and if applicable Section 2 EPSC Bespoke Height Changes surcharge. Please state finish required on order
- Special Glass Finishes available on sizes with C Panel 181 upwards

			
Bronze Tinted £285 ex. VAT	Green Tinted £285 ex. VAT	Blue Tinted £285 ex. VAT	Black Tinted £285 ex. VAT

		
Satin/Frosted £475 ex. VAT	Low-iron £475 ex. VAT	Ultra Black £475 ex. VAT

EPST use £350 ex VAT for Tinted finishes and £585 ex VAT for Satin/Frosted, Ultra Clear Low-iron and Ultra Black.

Colours and finishes are for representation purposes only

MEASURE AND INSTALLATION BY MATKI INSTALLATIONS

1. Measure	£195.00 ex VAT
2. EPSC Installation	£650.00 ex VAT
3. EPST Installation	£725.00 ex VAT
Outsize Installation (Above 2200mm)	Contact Matki

Measure and Installation are priced separately

Please note, product prices and installation price may change after Measure dependent on site conditions and customer preferences

For areas outside mainland UK and Ireland, please contact Matki for pricing

See pages 56-57 for more details



SLIDING DOOR FOR RECESS

FEATURES

- 10mm Clear Safety Glass (EN12150-1)
- Elegant and strong mirror-polished Stainless Steel top track and wall profiles
- Soft-closure mechanisms and shaped track inners for extra smooth action
- EauZone Plus can be fitted onto a shower tray, shower floor or directly on to a waterproof tiled floor
- Matki Glass Guard Easy Clean Protection included in price

HOW TO ORDER

- Visit a Matki EauZone Plus Dealer to view displays and discuss models
- An EauZone Plus Configurator Tool is available on the Matki Website
- Installation by Matki Installations £575 ex VAT, see page 56-57

FINISH

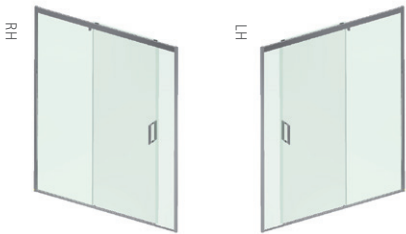
- Chrome/Mirror Polished Stainless Steel; For Brushed Steel, Polished Nickel and Gold add £425.00
- Standard Clear Glass; Available on models with C panel 180-195 and upwards, for all tinted colours add £985.00, for Low-Iron, Satin Frosted and Ultra-Black add £1,125.00 ex VAT

DIMENSIONS (MM)                      PRICES

MODEL RECESS	A	B	C	D	PRICE (EX. VAT)	PRICE (INC. VAT)
EPSR1200	1162-1192	465	55-70	523-543	£1,357.00	£1,628.40
EPSR1225	1187-1217	465	80-95	523-543	£1,547.00	£1,856.40
EPSR1250	1212-1242	465	105-120	523-543	£1,547.00	£1,856.40
EPSR1275	1237-1267	465	130-145	523-543	£1,547.00	£1,856.40
EPSR1300	1262-1292	465	155-170	523-543	£1,547.00	£1,856.40
EPSR1325	1287-1317	465	180-195	523-543	£1,553.00	£1,863.60
EPSR1350	1312-1342	465	205-220	523-543	£1,553.00	£1,863.60
EPSR1375	1337-1367	465	230-245	523-543	£1,553.00	£1,863.60
EPSR1400	1362-1392	465	255-270	523-543	£1,553.00	£1,863.60
EPSR1425	1387-1417	465	280-295	523-543	£1,566.00	£1,879.20
EPSR1450	1412-1442	465	305-320	523-543	£1,566.00	£1,879.20
EPSR1475	1437-1467	465	330-345	523-543	£1,566.00	£1,879.20
EPSR1500	1462-1492	610	55-70	678-693	£1,566.00	£1,879.20
EPSR1525	1487-1517	610	80-95	678-693	£1,622.00	£1,946.40
EPSR1550	1512-1542	610	105-120	678-693	£1,622.00	£1,946.40
EPSR1575	1537-1567	610	130-145	678-693	£1,622.00	£1,946.40
EPSR1600	1562-1592	610	155-170	678-693	£1,622.00	£1,946.40
EPSR1625	1587-1617	610	180-195	678-693	£1,699.00	£2,038.80
EPSR1650	1612-1642	610	205-220	678-693	£1,699.00	£2,038.80
EPSR1675	1637-1667	610	230-245	678-693	£1,699.00	£2,038.80
EPSR1700	1662-1692	610	255-270	678-693	£1,699.00	£2,038.80
EPSR1725	1687-1717	610	280-295	678-693	£1,762.00	£2,114.40
EPSR1750	1712-1742	610	305-320	678-693	£1,762.00	£2,114.40
EPSR1775	1737-1767	610	330-345	678-693	£1,762.00	£2,114.40
EPSR1800	1762-1792	610	355-370	678-693	£1,762.00	£2,114.40



CONFIGURATIONS



HANDLE OPTIONS:



Linear handle will be supplied if not otherwise specified



HOW TO ORDER

- Review the Bespoke section (page 42-57) and discuss options with a Matki EauZone Plus Dealer
- Please see the Bespoke Order Timeline on page 57 for a guide on the Bespoke process
- Use Codes and Surcharges below for order and pricing
- For more details and inspiration visit the Bespoke section of the Matki website at [www.matki.co.uk](http://www.matki.co.uk)
- Our Bespoke Department can be contacted on [eauzonebespoke@matki.co.uk](mailto:eauzonebespoke@matki.co.uk) or 01454 322888

1. BESPOKE BASE SURCHARGES

- For all Bespoke, use standard price of next nearest EPSR model from opposite page and add the Base Surcharge first for each Bespoke panel, then the Height Changes Surcharge if applicable
- For width changes within maximum standard sizes stated on the opposite page, add Base Surcharges only. For outsize widths please contact Matki
- Add surcharge and suffix codes to Standard, e.g. EPSR1200BCD



All prices exclude VAT

2. EPSR BESPOKE HEIGHT CHANGES

- Increased height available on all models excluding EPSR1200 to EPSR1300
- Increased Height up to 2200mm\*
- Reduced Height is covered by the Base Surcharge. On models EPSR1200, EPSR1225, EPSR1250, reduced height can be ordered at 1800mm, 1850mm, 1900mm and 1950mm
- Add surcharges and suffix codes per panel to Bespoke Base, e.g. EPSR1200HHH



\*Beyond 2200mm, please contact Matki

3. SPECIAL GLASS FINISHES - BESPOKE ONLY

- For Special Glass Finishes please add the below surcharge per enclosure to the totals of the standard unit + Section 1 Bespoke Base Surcharge and if applicable Section 2 EPSR Bespoke Height Changes surcharge. Please state finish required on order
- Special Glass Finishes available on sizes with C Panel 180-195 upwards



Colours and finishes are for representation purposes only

MEASURE AND INSTALLATION BY MATKI INSTALLATIONS

1. Measure	£195.00 ex VAT
2. Installation	£575.00 ex VAT
Outsize Installation (Above 2200mm)	Contact Matki

Measure and Installation are priced separately

Please note, product prices and installation price may change after Measure dependent on site conditions and customer preferences

For areas outside mainland UK and Ireland, please contact Matki for pricing

See pages 56-57 for more details



CURVED CORNER

FEATURES

- 10mm Clear Safety Glass (EN12150-1)
- Elegant and strong mirror-polished Stainless Steel top track and wall profiles
- Soft-closure mechanisms and shaped track inners for extra smooth action
- EauZone Plus can be fitted onto a shower tray, shower floor or directly on to a waterproof tiled floor
- Matki Glass Guard Easy Clean Protection included in price

HOW TO ORDER

- Visit a Matki EauZone Plus Dealer to view displays and discuss models
- An EauZone Plus Configurator Tool is available on the Matki Website
- Installation by Matki Installations £575 ex VAT, see page 56-57

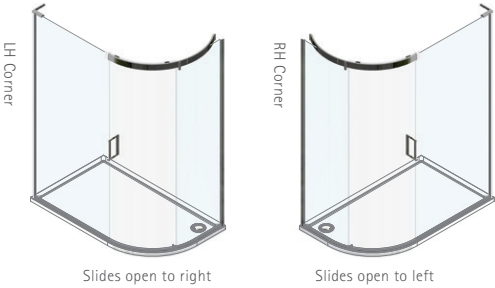
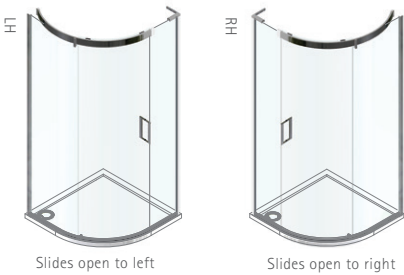
FINISH

- Chrome / Mirror Polished Stainless Steel
- For Polished Nickel, Brushed Steel and Gold add £425.00 excluding VAT

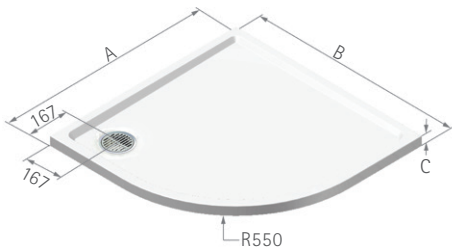
DIMENSIONS (MM)			PRICES	
MODEL CURVED	A	B	PRICE (EX. VAT)	PRICE (INC. VAT)
ECS900	876 - 890	325 - 340	£2,180.00	£2,616.00
ECS1290	1176 - 1190	625 - 640	£2,294.00	£2,752.80
ECS1590	1476 - 1490	925 - 940	£2,414.00	£2,896.80



CONFIGURATIONS



CURVED 40 SHOWER TRAYS



DIMENSIONS (MM)				PRICES	
MODEL CLC40	A	B	C	PRICE (EX. VAT)	PRICE (INC. VAT)
CLC900	900	900	40	£345.00	£414.00
CLC1290LH*	900	1200	40	£389.00	£466.80
CLC1290RH	1200	900	40	£389.00	£466.80
CLC1590LH*	900	1500	40	£408.00	£489.60
CLC1590RH	1500	900	40	£408.00	£489.60

\* Waste is located in RH Corner for this model, other models have waste outlet in LH Corner, see illustrations  
Also available in any colour in cast stone with code ULC. Prices as above, see page 102





HOW TO ORDER

- Review the Bespoke section (page 42-57) and discuss options with a Matki EauZone Plus Dealer
- Please see the Bespoke Order Timeline on page 57 for a guide on the Bespoke process
- Use Codes and Surcharges below for order and pricing
- For more details and inspiration visit the Bespoke section of the Matki website at [www.matki.co.uk](http://www.matki.co.uk)
- Our Bespoke Department can be contacted on [eauzonebespoke@matki.co.uk](mailto:eauzonebespoke@matki.co.uk) or 01454 322888

1. BESPOKE GLASS SURCHARGES

- For all Bespoke, use standard price of next nearest ECS model from opposite page and add the Base Surcharge first for Bespoke B panel, then the Shaping Surcharge if applicable
- For width changes within maximum standard size stated on the opposite page, add Base Surcharges only. For outsize widths please contact Matki
- Add surcharge and suffix codes to Standard, e.g. ECS1290B



All prices exclude VAT

MEASURE AND INSTALLATION BY MATKI INSTALLATIONS

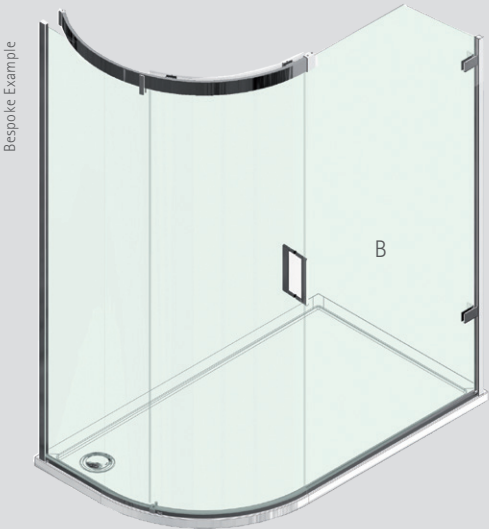
1. Measure	£195.00 ex VAT
2. Installation	£575.00 ex VAT
Outsize Installation	Contact Matki

Measure and Installation are priced separately

Please note, product prices and installation price may change after Measure dependent on site conditions and customer preferences

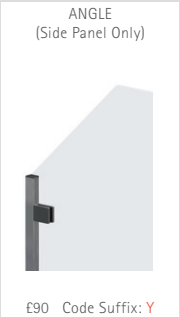
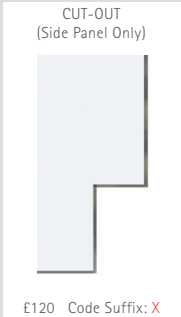
For areas outside mainland UK and Ireland, please contact Matki for pricing

See pages 56-57 for more details



2. ESC BESPOKE SHAPING SURCHARGES

- The fixed panel (B) can be made Bespoke with angles and cut-outs
- Height changes not available
- Add surcharges and suffix codes per panel to Bespoke Base, e.g. ECS900BXY





HINGED DOOR WITH  
HINGE PANEL FOR CORNER

FEATURES

- 10mm Clear Safety Glass (EN12150-1)
- Patented Non-Slip Hinge to ensure door stays firmly set in position
- EauZone Plus can be fitted onto a shower tray, shower floor or directly onto a waterproof tiled floor
- Very high quality solid Brass fittings and high lustre Aluminium wall mounts available in choice of finishes
- Matki Glass Guard Easy Clean protection included in price

HOW TO ORDER

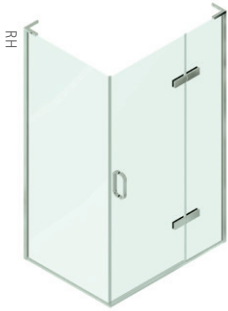
- Visit a Matki EauZone Plus Dealer to view displays and discuss models
- An EauZone Plus Configurator Tool is available on the Matki Website
- Alternative door and panel combinations are available at the same price for each model size. The standard for each size is listed in the table below and it is possible to mix and match panel and door combinations from the diagram opposite. The total of the Panel and Door combinations must add up to the total for the chosen model, i.e. EPHC1200(A) 700 + (B) 500 = 1200
- Installation by Matki Installations £575 ex VAT, see page 56-57

FINISH

- Chrome/Polished Silver; For Polished Nickel, Brushed Nickel, Gold, Brushed Gold and Matt Black add £425.00. Matt Black finish available with Bespoke Minimal, Recessed or No Frame options only. Please see pages 46 and 55 for details on finish variations
- Standard Clear Glass; For all Tinted colours add £970.00, for Low-Iron, Satin Frosted and Ultra-Black add £1,230.00 ex VAT

DIMENSIONS (MM)				PRICES	
MODEL CORNER DOOR	A + B	A	B	PRICE (EX. VAT)	PRICE (INC. VAT)
EPHC800	766 – 781	600	200	£1,452.00	£1,742.40
EPHC850	816 – 831	600	250	£1,457.00	£1,748.40
EPHC900	866 – 881	700	200	£1,464.00	£1,756.80
EPHC950	916 – 931	700	250	£1,475.00	£1,770.00
EPHC1000	966 – 981	800	200	£1,490.00	£1,788.00
EPHC1050	1016 – 1031	800	250	£1,501.00	£1,801.20
EPHC1100	1066 – 1081	700	400	£1,512.00	£1,814.40
EPHC1150	1116 – 1131	700	450	£1,527.00	£1,832.40
EPHC1200	1166 – 1181	700	500	£1,539.00	£1,846.80
EPHC1250	1216 – 1231	800	450	£1,553.00	£1,863.60
EPHC1300	1266 – 1281	800	500	£1,565.00	£1,878.00

DIMENSIONS (MM)		PRICES	
MODEL SIDE PANEL	C	PRICE (EX. VAT)	PRICE (INC. VAT)
EPHC700SP	668 – 683	£307.00	£368.40
EPHC760SP	728 – 743	£312.00	£374.40
EPHC800SP	768 – 783	£318.00	£381.60
EPHC900SP	868 – 883	£344.00	£412.80
EPHC1000SP	968 – 983	£368.00	£441.60



HANDLE OPTIONS:



Linear handle will be supplied if not otherwise specified.  
Matt Black finish only available with Linear Handle.



HOW TO ORDER

- Review the Bespoke section (page 42-57) and discuss options with a Matki EauZone Plus Dealer
- Please see the Bespoke Order Timeline on page 57 for a guide on the Bespoke process
- Use Codes and Surcharges below for order and pricing
- Minimal frame, Recessed Channels and No frame are only available with Measure and Installation by Matki
- For more details and inspiration visit the Bespoke section of the Matki website at [www.matki.co.uk](http://www.matki.co.uk)
- Our Bespoke Department can be contacted on [eauzonebespoke@matki.co.uk](mailto:eauzonebespoke@matki.co.uk) or 01454 322888

1. BESPOKE BASE SURCHARGES

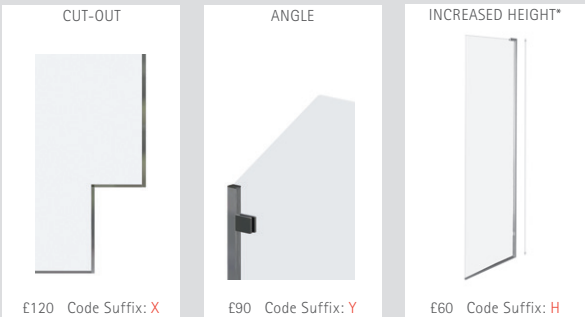
- For all Bespoke, use standard price of next nearest EPHC model and EPHC\_SP Side Panel model and add the Base Surcharge first for each Bespoke panel, then the Shaping Surcharge if applicable
- For width and height changes within the maximum standard panel sizes stated on the opposite page, add the Base Surcharge only
- Add the Base surcharge for all the below panels on units involving Minimal frames, Recessed Channels and No frame options
- Add surcharge and suffix codes to the standard code shown opposite, e.g. EPHC900AB for a Bespoke Door and Hinge Panel. EPHC760SPC for a Bespoke Side Panel



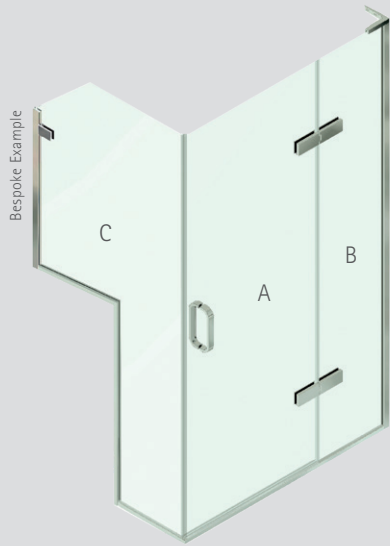
All prices exclude VAT

3. BESPOKE SHAPING SURCHARGES

- For Cut-outs, Angles and Increased Height up to 2200mm\*
- Add surcharges and suffixes to the Bespoke Base
- Add multiple codes and surcharges according to the number of angles, cut-outs or number of increased height panels required, e.g. EPHC1200ABHHY would signify a Bespoke Door and Hinge Panel both increased height with one angle required



\*Beyond 2200mm, please contact Matki



2. EPHC BESPOKE FRAME AND HINGE OPTIONS



4. SPECIAL GLASS FINISHES - BESPOKE ONLY

- For Special Glass Finishes please add the below surcharge per enclosure to the totals of the standard unit + Section 1 Bespoke Base Surcharge and if applicable Section 3 Bespoke Shaping Surcharge. Please state finish required on order



Colours and finishes are for representation purposes only

MEASURE AND INSTALLATION BY MATKI INSTALLATIONS

1. Measure	£195.00 ex VAT
2. Installation	£575.00 ex VAT
Outside Installation (Above 2200mm)	Contact Matki

Measure and Installation are priced separately

Please note, product prices and installation price may change after Measure dependent on site conditions and customer preferences

For areas outside mainland UK and Ireland, please contact Matki for pricing

See pages 56-57 for more details

VAT CALCULATED AT 20 %



HINGED DOOR WITH HINGE PANEL AND INLINE PANEL FOR CORNER

FEATURES

- 10mm Clear Safety Glass (EN12150-1)
- Patented Non-Slip Hinge to ensure door stays firmly set in position
- EauZone Plus can be fitted onto a shower tray, shower floor or directly onto a waterproof tiled floor
- Very high quality solid Brass fittings and high lustre Aluminium wall mounts available in choice of finishes
- Matki Glass Guard Easy Clean protection included in price

HOW TO ORDER

- Visit a Matki EauZone Plus Dealer to view displays and discuss models
- An EauZone Plus Configurator Tool is available on the Matki Website
- Alternative door and panel combinations are available at the same price for each model size. The standard for each size is listed in the table below and it is possible to mix and match panel and door combinations from the diagram opposite. The total of the Panel and Door combinations must add up to the total for the chosen model, i.e. EPIC1500(A) 600 + (B) 500 + (C) 400 = 1500
- Installation by Matki Installations £650 ex VAT, see pages 56-57

FINISH

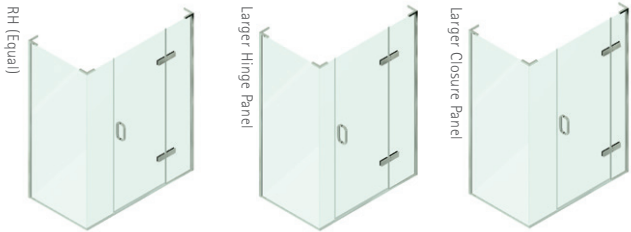
- Chrome/Polished Silver; For Polished Nickel, Brushed Nickel, Gold, Brushed Gold and Matt Black add £425.00. Matt Black finish available with Bespoke Minimal, Recessed or No Frame options only. Please see pages 46 and 55 for details on finish variations
- Standard Clear Glass; For all Tinted colours add £1,305.00, for Low-Iron, Satin Frosted and Ultra-Black add £1,570.00 ex VAT

DIMENSIONS (MM) PRICES

MODEL CORNER DOOR	A + B + C	A	B	C	PRICE (EX. VAT)	PRICE (INC. VAT)
EPIC1000	967 - 982	600	200	200	£1,708.00	£2,049.60
EPIC1050	1017 - 1032	600	250	200	£1,714.00	£2,056.80
EPIC1100	1067 - 1082	700	200	200	£1,720.00	£2,064.00
EPIC1150	1117 - 1132	700	250	200	£1,731.00	£2,077.20
EPIC1200	1167 - 1182	800	200	200	£1,746.00	£2,095.20
EPIC1250	1217 - 1232	800	250	200	£1,757.00	£2,108.40
EPIC1300	1267 - 1282	700	200	400	£1,771.00	£2,125.20
EPIC1350	1317 - 1332	800	300	250	£1,783.00	£2,139.60
EPIC1400	1367 - 1382	800	200	400	£1,797.00	£2,156.40
EPIC1450	1417 - 1432	800	300	350	£1,809.00	£2,170.80
EPIC1500	1467 - 1482	700	400	400	£1,820.00	£2,184.00
EPIC1550	1517 - 1532	800	350	400	£1,835.00	£2,202.00
EPIC1600	1567 - 1582	800	400	400	£1,845.00	£2,214.00
EPIC1650	1617 - 1632	800	400	450	£1,856.00	£2,227.20
EPIC1700	1667 - 1682	800	450	450	£1,871.00	£2,245.20
EPIC1750	1717 - 1732	800	500	450	£1,882.00	£2,258.40
EPIC1800	1767 - 1782	800	500	500	£1,896.00	£2,275.20
EPIC1850	1817 - 1832	800	500	550	£1,905.00	£2,286.00
EPIC1900	1867 - 1882	800	500	600	£1,921.00	£2,305.20



CONFIGURATIONS



HANDLE OPTIONS:



Linear handle will be supplied if not otherwise specified.  
Matt Black finish only available with Linear Handle.

DIMENSIONS (MM) PRICES

MODEL SIDE PANEL	D	PRICE (EX. VAT)	PRICE (INC. VAT)
EPIC700SP	665 - 680	£314.00	£376.80
EPIC760SP	725 - 740	£318.00	£381.60
EPIC800SP	765 - 780	£324.00	£388.80
EPIC900SP	865 - 880	£349.00	£418.80
EPIC1000SP	965 - 980	£373.00	£447.60

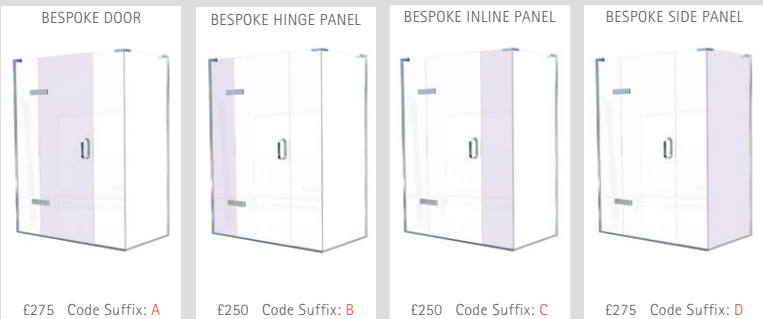


HOW TO ORDER

- Review the Bespoke section (page 42-57) and discuss options with a Matki EauZone Plus Dealer
- Please see the Bespoke Order Timeline on page 57 for a guide on the Bespoke process
- Use Codes and Surcharges below for order and pricing
- Minimal frame, Recessed Channels and No frame are only available with Measure and Installation by Matki
- For more details and inspiration visit the Bespoke section of the Matki website at [www.matki.co.uk](http://www.matki.co.uk)
- Our Bespoke Department can be contacted on [eauzonebespoke@matki.co.uk](mailto:eauzonebespoke@matki.co.uk) or 01454 322888

1. BESPOKE BASE SURCHARGES

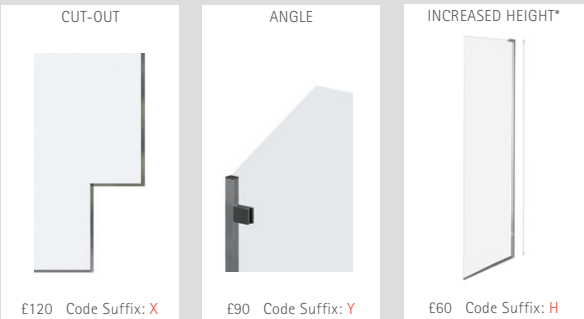
- For all Bespoke, use standard price of next nearest EPIC model and EPIC\_SP Side Panel model and add the Base Surcharge first for each Bespoke panel, then the Shaping Surcharge if applicable
- For width and height changes within the maximum standard panel sizes stated on the opposite page, add the Base Surcharge only
- Add the Base surcharge for all the below panels on units involving Minimal frames, Recessed Channels and No frame options
- Add surcharge and suffix codes to the standard code shown opposite, e.g. EPIC1200ABC for a Bespoke Door, Hinge Panel and Inline Panel. EPIC760SPD for a Bespoke Side Panel



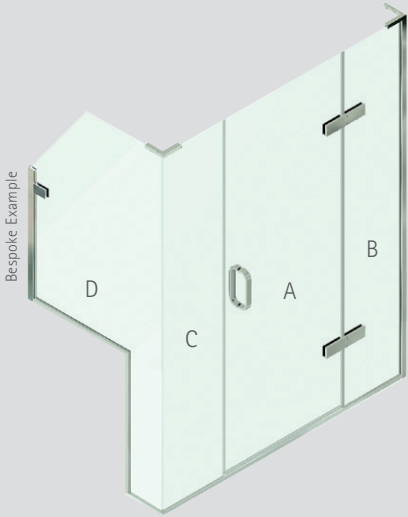
All prices exclude VAT

3. BESPOKE SHAPING SURCHARGES

- For Cut-outs, Angles and Increased Height up to 2200mm\*
- Add surcharges and suffixes to the Bespoke Base
- Add multiple codes and surcharges according to the number of angles, cut-outs or number of increased height panels required, e.g. EPIC1200ABCHHHY would signify a Bespoke Door, Hinge Panel and Inline Panel increased height with one angle required

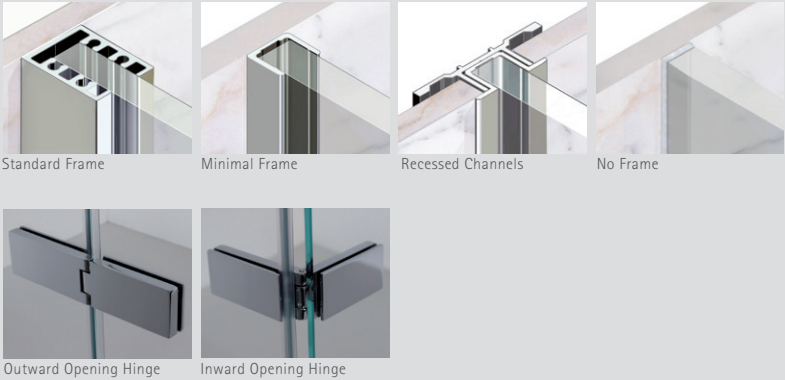


\*Beyond 2200mm, please contact Matki



Also available on request as three-sided or hinged off inline panel (C), price on application

2. EPIC BESPOKE FRAME AND HINGE OPTIONS



4. SPECIAL GLASS FINISHES - BESPOKE ONLY

- For Special Glass Finishes please add the below surcharge per enclosure to the totals of the standard unit + Section 1 Bespoke Base Surcharge and if applicable Section 3 Bespoke Shaping Surcharge. Please state finish required on order



Colours and finishes are for representation purposes only

MEASURE AND INSTALLATION BY MATKI INSTALLATIONS

1. Measure	£195.00 ex VAT
2. Installation	£650.00 ex VAT
3. Installation Three Sided	£725.00 ex VAT
Outsize Installation (Above 2200mm)	Contact Matki

Measure and Installation are priced separately  
Please note, product prices and installation price may change after Measure dependent on site conditions and customer preferences  
For areas outside mainland UK and Ireland, please contact Matki for pricing  
See pages 56-57 for more details  
VAT CALCULATED AT 20 %

HINGED DOOR FROM WALL  
AND INLINE PANEL FOR CORNER

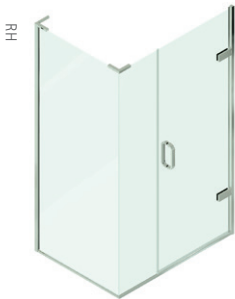
- FEATURES
- 10mm Clear Safety Glass (EN12150-1)
  - Patented Non-Slip Hinge to ensure door stays firmly set in position
  - EauZone Plus can be fitted onto a shower tray, shower floor or directly onto a waterproof tiled floor
  - Very high quality solid Brass fittings and high lustre Aluminium wall mounts available in choice of finishes
  - Matki Glass Guard Easy Clean protection included in price

- HOW TO ORDER
- Visit a Matki EauZone Plus Dealer to view displays and discuss models
  - An EauZone Plus Configurator Tool is available on the Matki Website
  - Alternative door and panel combinations are available at the same price for each model size. The standard for each size is listed in the table below and it is possible to mix and match panel and door combinations from the diagram opposite. The total of the Panel and Door combinations must add up to the total for the chosen model, i.e. EPWC1200(A) 600 + (B) 600 = 1200
  - Installation by Matki Installations £575 ex VAT, see pages 56-57

- FINISH
- Chrome/Polished Silver; For Polished Nickel, Brushed Nickel, Gold, Brushed Gold and Matt Black add £425.00. Matt Black finish available with Bespoke Minimal, Recessed or No Frame options only. Please see pages 46 and 55 for details on finish variations
  - Standard Clear Glass; For all Tinted colours add £1,020.00, for Low-Iron, Satin Frosted and Ultra-Black add £1,305.00 ex VAT

DIMENSIONS (MM)		PRICES			
MODEL CORNER DOOR	A + B	A	B	PRICE (EX. VAT)	PRICE (INC. VAT)
EPWC800	770 – 785	600	200	£1,272.00	£1,526.40
EPWC850	820 – 835	600	250	£1,275.00	£1,530.00
EPWC900	870 – 885	700	200	£1,277.00	£1,532.40
EPWC950	920 – 935	700	250	£1,283.00	£1,539.60
EPWC1000	970 – 985	800	200	£1,289.00	£1,546.80
EPWC1050	1020 – 1035	800	250	£1,295.00	£1,554.00
EPWC1100	1070 – 1085	900	200	£1,316.00	£1,579.20
EPWC1150	1120 – 1135	900	250	£1,322.00	£1,586.40
EPWC1200	1170 – 1185	800	400	£1,337.00	£1,604.40
EPWC1250	1220 – 1235	800	450	£1,346.00	£1,615.20
EPWC1300	1270 – 1285	900	400	£1,364.00	£1,636.80
EPWC1350	1320 – 1335	900	450	£1,373.00	£1,647.60
EPWC1400	1370 – 1385	900	500	£1,379.00	£1,654.80
EPWC1450	1420 – 1435	900	550	£1,391.00	£1,669.20
EPWC1500	1470 – 1485	900	600	£1,404.00	£1,684.80

DIMENSIONS (MM)		PRICES	
MODEL SIDE PANEL	C	PRICE (EX. VAT)	PRICE (INC. VAT)
EPWC700SP	665 – 680	£314.00	£376.80
EPWC760SP	725 – 740	£318.00	£381.60
EPWC800SP	765 – 780	£324.00	£388.80
EPWC900SP	865 – 880	£349.00	£418.80
EPWC1000SP	965 – 980	£373.00	£447.60



HANDLE OPTIONS:



Linear handle will be supplied if not otherwise specified.  
Matt Black finish only available with Linear Handle.



HOW TO ORDER

- Review the Bespoke section (page 42-57) and discuss options with a Matki EauZone Plus Dealer
- Please see the Bespoke Order Timeline on page 57 for a guide on the Bespoke process
- Use Codes and Surcharges below for order and pricing
- Minimal frame, Recessed Channels and No frame are only available with Measure and Installation by Matki
- For more details and inspiration visit the Bespoke section of the Matki website at [www.matki.co.uk](http://www.matki.co.uk)
- Our Bespoke Department can be contacted on [eauzonebespoke@matki.co.uk](mailto:eauzonebespoke@matki.co.uk) or 01454 322888

1. BESPOKE BASE SURCHARGES

- For all Bespoke, use standard price of next nearest EPWC model and EPWC\_SP Side Panel model and add the Base Surcharge first for each Bespoke panel, then the Shaping Surcharge if applicable
- For width and height changes within the maximum standard panel sizes stated on the opposite page, add the Base Surcharge only
- Add the Base surcharge for all the below panels on units involving Minimal frames, Recessed Channels and No frame options
- Add surcharge and suffix codes to the standard code shown opposite, e.g. EPWC900AB for a Bespoke Door and Inline Panel. EPWC760SPC for a Bespoke Side Panel

BESPOKE DOOR



£275 Code Suffix: **A**

BESPOKE INLINE PANEL



£250 Code Suffix: **B**

BESPOKE SIDE PANEL




£275 Code Suffix: **C**

All prices exclude VAT

3. BESPOKE SHAPING SURCHARGES


- For Cut-outs, Angles and Increased Height up to 2200mm\*
- Add surcharges and suffixes to the Bespoke Base
- Add multiple codes and surcharges according to the number of angles, cut-outs or number of increased height panels required, e.g. EPWC1200ABHY would signify a Bespoke Door and Inline Panel both increased height with one angle required

CUT-OUT




£120 Code Suffix: **X**

ANGLE



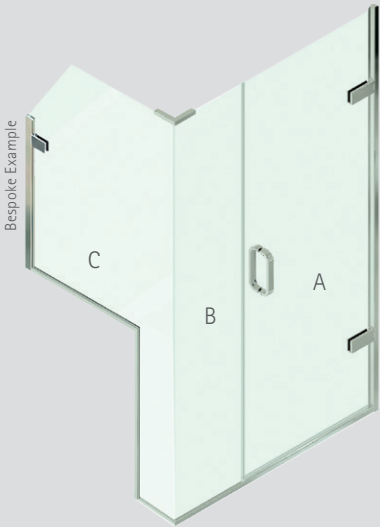
£90 Code Suffix: **Y**

INCREASED HEIGHT\*



£60 Code Suffix: **H**

\*Beyond 2200mm, please contact Matki



Also available on request hinged off inline panel (B), price on application

2. EPWC BESPOKE FRAME AND HINGE OPTIONS



Standard Frame



Minimal Frame



Recessed Channels



No Frame



Outward Opening Hinge



Inward Opening Hinge

4. SPECIAL GLASS FINISHES - BESPOKE ONLY

- For Special Glass Finishes please add the below surcharge per enclosure to the totals of the standard unit + Section 1 Bespoke Base Surcharge and if applicable Section 3 Bespoke Shaping Surcharge. Please state finish required on order



Bronze Tinted  
£220 ex. VAT



Green Tinted  
£220 ex. VAT



Blue Tinted  
£220 ex. VAT



Black Tinted  
£220 ex. VAT



Satin/Frosted  
£505 ex. VAT



Low-iron  
£505 ex. VAT



Ultra Black  
£505 ex. VAT

Colours and finishes are for representation purposes only

MEASURE AND INSTALLATION BY MATKI INSTALLATIONS

- |                                     |                |
|-------------------------------------|----------------|
| 1. Measure                          | £195.00 ex VAT |
| 2. Installation                     | £575.00 ex VAT |
| Outside Installation (Above 2200mm) | Contact Matki  |

Measure and Installation are priced separately

Please note, product prices and installation price may change after Measure dependent on site conditions and customer preferences

For areas outside mainland UK and Ireland, please contact Matki for pricing

See pages 56-57 for more details

VAT CALCULATED AT 20 %

HINGED DOOR FOR CORNER

- FEATURES
- 10mm Clear Safety Glass (EN12150-1)
  - Patented Non-Slip Hinge to ensure door stays firmly set in position
  - EauZone Plus can be fitted onto a shower tray, shower floor or directly onto a waterproof tiled floor
  - Very high quality solid Brass fittings and high lustre Aluminium wall mounts available in choice of finishes
  - Matki Glass Guard Easy Clean protection included in price

- HOW TO ORDER
- Visit a Matki EauZone Plus Dealer to view displays and discuss models
  - An EauZone Plus Configurator Tool is available on the Matki Website
  - Installation by Matki Installations £500 ex VAT, see pages 56-57

- FINISH
- Chrome/Polished Silver; For Polished Nickel, Brushed Nickel, Gold, Brushed Gold and Matt Black add £425.00. Matt Black finish available with Bespoke Minimal, Recessed or No Frame options only. Please see pages 46 and 55 for details on finish variations
  - Standard Clear Glass; For all Tinted colours add £750.00, for Low-Iron, Satin Frosted and Ultra-Black add £970.00 ex VAT

DIMENSIONS (MM)		PRICES	
MODEL CORNER DOOR	A	PRICE (EX. VAT)	PRICE (INC. VAT)
EPC600	572 – 587	£1,012.00	£1,214.40
EPC700	672 – 687	£1,023.00	£1,227.60
EPC760	732 – 747	£1,035.00	£1,242.00
EPC800	772 – 787	£1,043.00	£1,251.60
EPC900	872 – 887	£1,068.00	£1,281.60

DIMENSIONS (MM)		PRICES	
MODEL SIDE PANEL	B	PRICE (EX. VAT)	PRICE (INC. VAT)
EPC700SP	669 – 684	£307.00	£368.40
EPC760SP	729 – 744	£312.00	£374.40
EPC800SP	769 – 784	£318.00	£381.60
EPC900SP	869 – 884	£344.00	£412.80
EPC1000SP	969 – 984	£368.00	£441.60



HANDLE OPTIONS:



Linear handle will be supplied if not otherwise specified.  
Matt Black finish only available with Linear Handle.



HOW TO ORDER

- Review the Bespoke section (page 42-57) and discuss options with a Matki EauZone Plus Dealer
- Please see the Bespoke Order Timeline on page 57 for a guide on the Bespoke process
- Use Codes and Surcharges below for order and pricing
- Minimal frame, Recessed Channels and No frame are only available with Measure and Installation by Matki
- For more details and inspiration visit the Bespoke section of the Matki website at [www.matki.co.uk](http://www.matki.co.uk)
- Our Bespoke Department can be contacted on [eauzonebespoke@matki.co.uk](mailto:eauzonebespoke@matki.co.uk) or 01454 322888

1. BESPOKE BASE SURCHARGES

- For all Bespoke, use standard price of next nearest EPC model and EPC\_SP Side Panel model and add the Base Surcharge first for each Bespoke panel, then the Shaping Surcharge if applicable
- For width and height changes within the maximum standard panel sizes stated on the opposite page, add the Base Surcharge only
- Add the Base surcharge for all the below panels on units involving Minimal frames, Recessed Channels and No frame options
- Add surcharge and suffix codes to the standard code shown opposite, e.g. EPC900A for a Bespoke Door. EPC760SPB for a Bespoke Side Panel

BESPOKE DOOR



£275 Code Suffix: A

BESPOKE SIDE PANEL




£275 Code Suffix: B

3. BESPOKE SHAPING SURCHARGES


- For Cut-outs, Angles and Increased Height up to 2200mm\*
- Add surcharges and suffixes to the Bespoke Base
- Add multiple codes and surcharges according to the number of angles, cut-outs or number of increased height panels required, e.g. EPC800AHY would signify a Bespoke Door increased height with one angle required

CUT-OUT




£120 Code Suffix: X

ANGLE



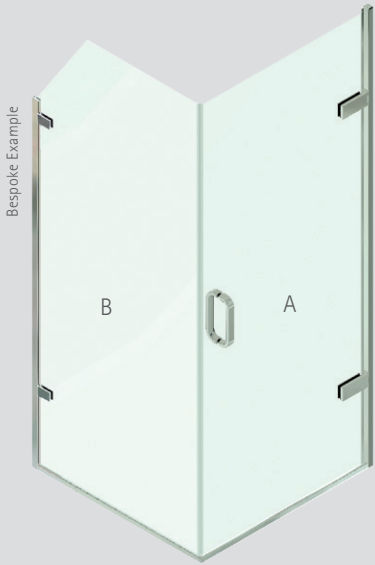
£90 Code Suffix: Y

INCREASED HEIGHT\*




£60 Code Suffix: H

\*Beyond 2200mm, please contact Matki



2. EPC BESPOKE FRAME AND HINGE OPTIONS



Standard Frame



Minimal Frame



Recessed Channels



No Frame



Outward Opening Hinge

4. SPECIAL GLASS FINISHES - BESPOKE ONLY

- For Special Glass Finishes please add the below surcharge per enclosure to the totals of the standard unit, [Section 1](#) Bespoke Base Surcharge and if applicable [Section 3](#) Bespoke Shaping Surcharge. Please state finish required on order



Bronze Tinted  
£200 ex. VAT



Green Tinted  
£200 ex. VAT



Blue Tinted  
£200 ex. VAT



Black Tinted  
£200 ex. VAT



Satin/Frosted  
£420 ex. VAT



Low-iron  
£420 ex. VAT



Ultra Black  
£420 ex. VAT

Colours and finishes are for representation purposes only

MEASURE AND INSTALLATION BY MATKI INSTALLATIONS

1. Measure	£195.00 ex VAT
2. Installation	£500.00 ex VAT
Outsize Installation (Above 2200mm)	Contact Matki

Measure and Installation are priced separately  
Please note, product prices and installation price may change after Measure dependent on site conditions and customer preferences  
For areas outside mainland UK and Ireland, please contact Matki for pricing  
See pages 56-57 for more details

VAT CALCULATED AT 20 %

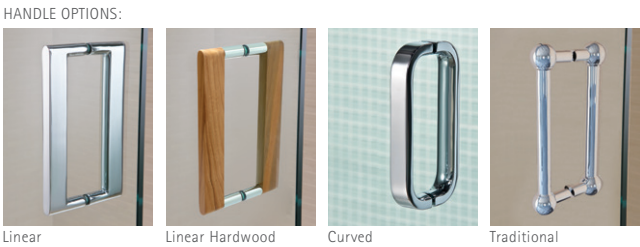
HINGED DOOR WITH  
HINGE PANEL FOR RECESS

- FEATURES
- 10mm Clear Safety Glass (EN12150-1)
  - Patented Non-Slip Hinge to ensure door stays firmly set in position
  - EauZone Plus can be fitted onto a shower tray, shower floor or directly onto a waterproof tiled floor
  - Very high quality solid Brass fittings and high lustre Aluminium wall mounts available in choice of finishes
  - Matki Glass Guard Easy Clean protection included in price

- HOW TO ORDER
- Visit a Matki EauZone Plus Dealer to view displays and discuss models
  - An EauZone Plus Configurator Tool is available on the Matki Website
  - Alternative door and panel combinations are available at the same price for each model size. The standard for each size is listed in the table below and it is possible to mix and match panel and door combinations from the diagram opposite. The total of the Panel and Door combinations must add up to the total for the chosen model, i.e. EPH1200 (A) 800 + (B) 400 = 1200
  - Installation by Matki Installations £500 ex VAT, see pages 56-57

- FINISH
- Chrome/Polished Silver; For Polished Nickel, Brushed Nickel, Gold, Brushed Gold and Matt Black add £425.00. Matt Black finish available with Bespoke Minimal, Recessed or No Frame options only. Please see pages 46 and 55 for details on finish variations
  - Standard Clear Glass; For all Tinted colours add £620.00, for Low-Iron, Satin Frosted and Ultra-Black add £735.00 ex VAT

DIMENSIONS (MM)				PRICES	
MODEL RECESS	A + B	A	B	PRICE (EX. VAT)	PRICE (INC. VAT)
EPH800	772 – 797	600	200	£1,405.00	£1,686.00
EPH850	822 – 847	600	250	£1,409.00	£1,690.80
EPH900	872 – 897	700	200	£1,416.00	£1,699.20
EPH950	922 – 947	700	250	£1,426.00	£1,711.20
EPH1000	972 – 997	800	200	£1,441.00	£1,729.20
EPH1050	1022 – 1047	800	250	£1,451.00	£1,741.20
EPH1100	1072 – 1097	700	400	£1,463.00	£1,755.60
EPH1150	1122 – 1147	700	450	£1,478.00	£1,773.60
EPH1200	1172 – 1197	700	500	£1,490.00	£1,788.00
EPH1250	1222 – 1247	800	450	£1,503.00	£1,803.60
EPH1300	1272 – 1297	800	500	£1,515.00	£1,818.00



Linear handle will be supplied if not otherwise specified.  
Matt Black finish only available with Linear Handle.



HOW TO ORDER

- Review the Bespoke section (page 42-57) and discuss options with a Matki EauZone Plus Dealer
- Please see the Bespoke Order Timeline on page 57 for a guide on the Bespoke process
- Use Codes and Surcharges below for order and pricing
- Minimal frame, Recessed Channels and No frame are only available with Measure and Installation by Matki
- For more details and inspiration visit the Bespoke section of the Matki website at [www.matki.co.uk](http://www.matki.co.uk)
- Our Bespoke Department can be contacted on [eauzonebespoke@matki.co.uk](mailto:eauzonebespoke@matki.co.uk) or 01454 322888



1. BESPOKE BASE SURCHARGES

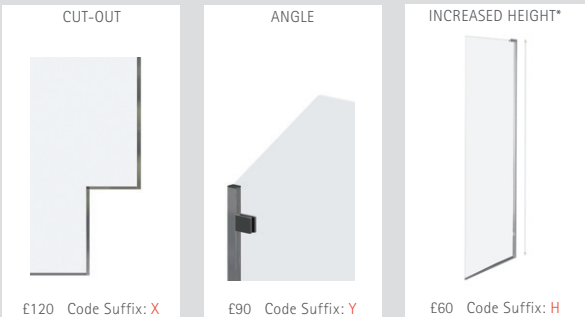
- For all Bespoke, use standard price of next nearest EPH model from opposite page and add the Base Surcharge first for each Bespoke panel, then the Shaping Surcharge if applicable
- For width and height changes within the maximum standard panel sizes stated on the opposite page, add the Base Surcharge only
- Add the Base surcharge for all the below panels on units involving Minimal frames, Recessed Channels and No frame options
- Add surcharge and suffix codes to the standard code shown opposite, e.g. EPH1200AB for a Bespoke Door and Hinge Panel



All prices exclude VAT

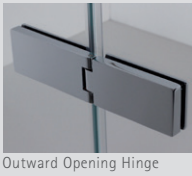
3. BESPOKE SHAPING SURCHARGES

- For Cut-outs, Angles and Increased Height up to 2200mm\*
- Add surcharges and suffix codes to the Bespoke Base
- Add multiple codes and surcharges according to number of angles, cut-outs or number of increased height panels required, e.g. EPH1200ABHHYY denotes both panels increased height and two angles required



\*Beyond 2200mm, please contact Matki

2. EPH BESPOKE FRAME AND HINGE OPTIONS



4. SPECIAL GLASS FINISHES - BESPOKE ONLY

- For Special Glass Finishes please add the below surcharge per enclosure to the totals of the standard unit + Section 1 Bespoke Base Surcharge and if applicable Section 3 Bespoke Shaping Surcharge. Please state finish required on order



Colours and finishes are for representation purposes only

MEASURE AND INSTALLATION BY MATKI INSTALLATIONS

1. Measure	£195.00 ex VAT
2. Installation	£500.00 ex VAT
Outside Installation (Above 2200mm)	Contact Matki

Measure and Installation are priced separately  
Please note, product prices and installation price may change after Measure dependent on site conditions and customer preferences  
For areas outside mainland UK and Ireland, please contact Matki for pricing  
See pages 56-57 for more details  
VAT CALCULATED AT 20 %

HINGED DOOR WITH HINGE PANEL AND INLINE PANEL FOR RECESS

- FEATURES
- 10mm Clear Safety Glass (EN12150-1)
  - Patented Non-Slip Hinge to ensure door stays firmly set in position
  - EauZone Plus can be fitted onto a shower tray, shower floor or directly onto a waterproof tiled floor
  - Very high quality solid Brass fittings and high lustre Aluminium wall mounts available in choice of finishes
  - Matki Glass Guard Easy Clean protection included in price

- HOW TO ORDER
- Visit a Matki EauZone Plus Dealer to view displays and discuss models
  - An EauZone Plus Configurator Tool is available on the Matki Website
  - Alternative door and panel combinations are available at the same price for each model size. The standard for each size is listed in the table below and it is possible to mix and match panel and door combinations from the diagram opposite. The total of the Panel and Door combinations must add up to the total for the chosen model, i.e. EPI1500 (A) 800 + (B) 400 + (C) 300 = 1500
  - Installation by Matki Installations £575 ex VAT, see pages 56-57

- FINISH
- Chrome/Polished Silver; For Polished Nickel, Brushed Nickel, Gold, Brushed Gold and Matt Black add £425.00. Matt Black finish available with Bespoke Minimal, Recessed or No Frame options only. Please see pages 46 and 55 for details on finish variations
  - Standard Clear Glass; For all Tinted colours add £900.00, for Low-Iron, Satin Frosted and Ultra-Black add £1,060.00 ex VAT

DIMENSIONS (MM)				PRICES		
MODEL RECESS	A + B + C	A	B	C	PRICE (EX. VAT)	PRICE (INC. VAT)
EPI1000	965 – 995	600	200	200	£1,602.00	£1,922.40
EPI1050	1015 – 1045	600	250	200	£1,607.00	£1,928.40
EPI1100	1065 – 1095	700	200	200	£1,613.00	£1,935.60
EPI1150	1115 – 1145	700	250	200	£1,624.00	£1,948.80
EPI1200	1165 – 1195	800	200	200	£1,639.00	£1,966.80
EPI1250	1215 – 1245	800	250	200	£1,650.00	£1,980.00
EPI1300	1265 – 1295	700	200	400	£1,664.00	£1,996.80
EPI1350	1315 – 1345	800	250	300	£1,674.00	£2,008.80
EPI1400	1365 – 1395	800	200	400	£1,690.00	£2,028.00
EPI1450	1415 – 1445	800	250	400	£1,701.00	£2,041.20
EPI1500	1465 – 1495	700	400	400	£1,712.00	£2,054.40
EPI1550	1515 – 1545	800	400	350	£1,726.00	£2,071.20
EPI1600	1565 – 1595	800	400	400	£1,738.00	£2,085.60
EPI1650	1615 – 1645	800	450	400	£1,753.00	£2,103.60
EPI1700	1665 – 1695	800	450	450	£1,764.00	£2,116.80
EPI1750	1715 – 1745	800	500	450	£1,769.00	£2,122.80
EPI1800	1765 – 1795	800	500	500	£1,788.00	£2,145.60
EPI1850	1815 – 1845	800	500	550	£1,797.00	£2,156.40
EPI1900	1865 – 1895	800	500	600	£1,808.00	£2,169.60



CONFIGURATIONS

Linear

Larger Hinge Panel

Larger Closure Panel

HANDLE OPTIONS:

Linear

Linear Hardwood

Curved

Traditional

Linear handle will be supplied if not otherwise specified.  
Matt Black finish only available with Linear Handle.



HOW TO ORDER

- Review the Bespoke section (page 42-57) and discuss options with a Matki EauZone Plus Dealer
- Please see the Bespoke Order Timeline on page 57 for a guide on the Bespoke process
- Use Codes and Surcharges below for order and pricing
- Minimal frame, Recessed Channels and No frame are only available with Measure and Installation by Matki
- For more details and inspiration visit the Bespoke section of the Matki website at [www.matki.co.uk](http://www.matki.co.uk)
- Our Bespoke Department can be contacted on [eauzonebespoke@matki.co.uk](mailto:eauzonebespoke@matki.co.uk) or 01454 322888

1. BESPOKE BASE SURCHARGES

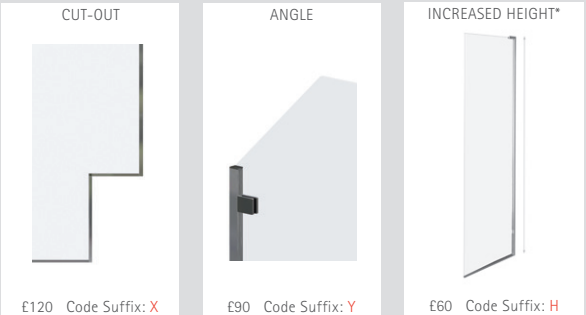
- For all Bespoke, use standard price of next nearest EPI model from opposite page and add the Base Surcharge first for each Bespoke panel, then the Shaping Surcharge if applicable
- For width and height changes within the maximum standard panel sizes stated on the opposite page, add the Base Surcharge only
- Add the Base surcharge for all the below panels on units involving Minimal frames, Recessed Channels and No frame options
- Add surcharge and suffix codes to the standard code shown opposite, e.g. EPI1200ABC for a Bespoke Door, Hinge Panel and Inline Panel



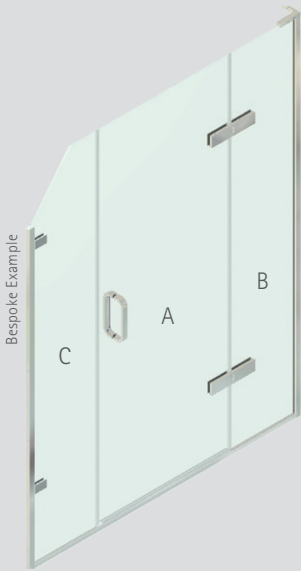
All prices exclude VAT

3. BESPOKE SHAPING SURCHARGES

- For Cut-outs, Angles and Increased Height up to 2200mm\*
- Add surcharges and suffixes to the Bespoke Base
- Add multiple codes and surcharges according to the number of angles, cut-outs or number of increased height panels required, e.g. EPI1200ABCHHY would signify a Bespoke Door, Hinge Panel and Inline Panel increased height with one angle required



\*Beyond 2200mm, please contact Matki



2. EPI BESPOKE FRAME AND HINGE OPTIONS



4. SPECIAL GLASS FINISHES - BESPOKE ONLY

- For Special Glass Finishes please add the below surcharge per enclosure to the totals of the standard unit + Section 1 Bespoke Base Surcharge and if applicable Section 3 Bespoke Shaping Surcharge. Please state finish required on order



Colours and finishes are for representation purposes only

MEASURE AND INSTALLATION BY MATKI INSTALLATIONS

- 1. Measure £195.00 ex VAT
- 2. Installation £575.00 ex VAT
- Outside Installation (Above 2200mm) Contact Matki

Measure and Installation are priced separately  
Please note, product prices and installation price may change after Measure dependent on site conditions and customer preferences  
For areas outside mainland UK and Ireland, please contact Matki for pricing  
See pages 56-57 for more details

VAT CALCULATED AT 20 %

HINGED DOOR FROM WALL  
AND INLINE PANEL FOR RECESS

FEATURES

- 10mm Clear Safety Glass (EN12150-1)
- Patented Non-Slip Hinge to ensure door stays firmly set in position
- EauZone Plus can be fitted onto a shower tray, shower floor or directly onto a waterproof tiled floor
- Very high quality solid Brass fittings and high lustre Aluminium wall mounts available in choice of finishes
- Matki Glass Guard Easy Clean protection included in price

HOW TO ORDER

- Visit a Matki EauZone Plus Dealer to view displays and discuss models
- An EauZone Plus Configurator Tool is available on the Matki Website
- Alternative door and panel combinations are available at the same price for each model size. The standard for each size is listed in the table below and it is possible to mix and match panel and door combinations from the diagram opposite. The total of the Panel and Door combinations must add up to the total for the chosen model, i.e. EPW1200 (A) 800 + (B) 400 = 1200
- Installation by Matki Installations £500 ex VAT, see pages 56-57

FINISH

- Chrome/Polished Silver; For Polished Nickel, Brushed Nickel, Gold, Brushed Gold and Matt Black add £425.00. Matt Black finish available with Bespoke Minimal, Recessed or No Frame options only. Please see pages 46 and 55 for details on finish variations
- Standard Clear Glass; For all Tinted colours add £630.00, for Low-Iron, Satin Frosted and Ultra-Black add £795.00 ex VAT

DIMENSIONS (MM)				PRICES	
MODEL RECESS	A + B	A	B	PRICE (EX. VAT)	PRICE (INC. VAT)
EPW800	770 – 800	600	200	£1,182.00	£1,418.40
EPW850	820 – 850	600	250	£1,189.00	£1,426.80
EPW900	870 – 900	700	200	£1,194.00	£1,432.80
EPW950	920 – 950	700	250	£1,206.00	£1,447.20
EPW1000	970 – 1000	800	200	£1,213.00	£1,455.60
EPW1050	1020 – 1050	800	250	£1,225.00	£1,470.00
EPW1100	1070 – 1100	900	200	£1,239.00	£1,486.80
EPW1150	1120 – 1150	900	250	£1,251.00	£1,501.20
EPW1200	1170 – 1200	700	500	£1,271.00	£1,525.20
EPW1250	1220 – 1250	800	450	£1,284.00	£1,540.80
EPW1300	1270 – 1300	900	400	£1,296.00	£1,555.20
EPW1350	1320 – 1350	900	450	£1,310.00	£1,572.00
EPW1400	1370 – 1400	900	500	£1,316.00	£1,579.20
EPW1450	1420 – 1450	900	550	£1,328.00	£1,593.60
EPW1500	1470 – 1500	900	600	£1,341.00	£1,609.20



HANDLE OPTIONS:



Linear handle will be supplied if not otherwise specified  
Matt Black finish only available with Linear Handle.



HOW TO ORDER

- Review the Bespoke section (page 42-57) and discuss options with a Matki EauZone Plus Dealer
- Please see the Bespoke Order Timeline on page 57 for a guide on the Bespoke process
- Use Codes and Surcharges below for order and pricing
- Minimal frame, Recessed Channels and No frame are only available with Measure and Installation by Matki
- For more details and inspiration visit the Bespoke section of the Matki website at [www.matki.co.uk](http://www.matki.co.uk)
- Our Bespoke Department can be contacted on [eauzonebespoke@matki.co.uk](mailto:eauzonebespoke@matki.co.uk) or 01454 322888

1. BESPOKE BASE SURCHARGES

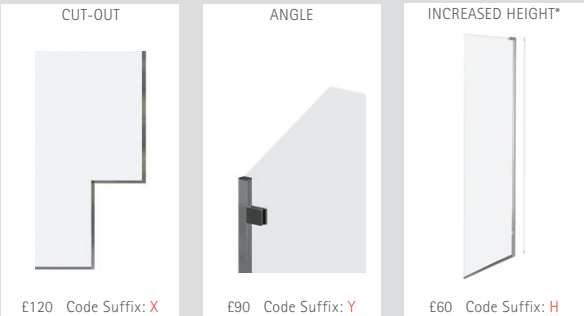
- For all Bespoke, use standard price of next nearest EPW model from opposite page and add the Base Surcharge first for each Bespoke panel, then the Shaping Surcharge if applicable
- For width and height changes within the maximum standard panel sizes stated on the opposite page, add the Base Surcharge only
- Add the Base surcharge for all the below panels on units involving Minimal frames, Recessed Channels and No frame options
- Add surcharge and suffix codes to the standard code shown opposite, e.g. EPW1200AB for a Bespoke Door and Inline Panel



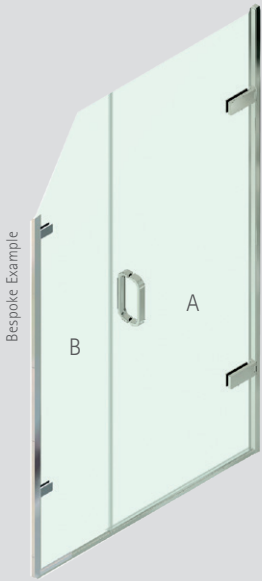
All prices exclude VAT

3. BESPOKE SHAPING SURCHARGES

- For Cut-outs, Angles and Increased Height up to 2200mm\*
- Add surcharges and suffixes to the Bespoke Base
- Add multiple codes and surcharges according to the number of angles, cut-outs or number of increased height panels required, e.g. EPW1200ABHHY would signify a Bespoke Door and Inline Panel both increased height with one angle required



\*Beyond 2200mm, please contact Matki



2. EPW BESPOKE FRAME AND HINGE OPTIONS



4. SPECIAL GLASS FINISHES - BESPOKE ONLY

- For Special Glass Finishes please add the below surcharge per enclosure to the totals of the standard unit + Section 1 Bespoke Base Surcharge and if applicable Section 3 Bespoke Shaping Surcharge. Please state finish required on order



Colours and finishes are for representation purposes only

MEASURE AND INSTALLATION BY MATKI INSTALLATIONS

1. Measure	£195.00 ex VAT
2. Installation	£500.00 ex VAT
Outsize Installation (Above 2200mm)	Contact Matki

Measure and Installation are priced separately

Please note, product prices and installation price may change after Measure dependent on site conditions and customer preferences

For areas outside mainland UK and Ireland, please contact Matki for pricing

See pages 56-57 for more details

VAT CALCULATED AT 20 %

HINGED DOOR FROM  
WALL FOR RECESS

FEATURES

- 10mm Clear Safety Glass (EN12150-1)
- Patented Non-Slip Hinge to ensure door stays firmly set in position
- EauZone Plus can be fitted onto a shower tray, shower floor or directly onto a waterproof tiled floor
- Very high quality solid Brass fittings and high lustre Aluminium wall mounts available in choice of finishes
- Matki Glass Guard Easy Clean protection included in price

HOW TO ORDER

- Visit a Matki EauZone Plus Dealer to view displays and discuss models
- An EauZone Plus Configurator Tool is available on the Matki Website
- Installation by Matki Installations £425 ex VAT, see pages 56-57

FINISH

- Chrome/Polished Silver; For Polished Nickel, Brushed Nickel, Gold, Brushed Gold and Matt Black add £425.00. Matt Black finish available with Bespoke Minimal, Recessed or No Frame options only. Please see pages 46 and 55 for details on finish variations
- Standard Clear Glass; For all Tinted colours add £365.00, for Low-Iron, Satin Frosted and Ultra-Black add £465.00 ex VAT



DIMENSIONS (MM)		PRICES	
MODEL RECESS	A	PRICE (EX. VAT)	PRICE (INC. VAT)
EPR700	675 – 700	£968.00	£1,161.60
EPR760	735 – 760	£982.00	£1,178.40
EPR800	775 – 800	£994.00	£1,192.80
EPR900	875 – 900	£1,020.00	£1,224.00

HANDLE OPTIONS:



Linear handle will be supplied if not otherwise specified.  
Matt Black finish only available with Linear Handle.



HOW TO ORDER

- Review the Bespoke section (page 42-57) and discuss options with a Matki EauZone Plus Dealer
- Please see the Bespoke Order Timeline on page 57 for a guide on the Bespoke process
- Use Codes and Surcharges below for order and pricing
- Minimal frame, Recessed Channels and No frame are only available with Measure and Installation by Matki
- For more details and inspiration visit the Bespoke section of the Matki website at [www.matki.co.uk](http://www.matki.co.uk)
- Our Bespoke Department can be contacted on [eauzonebespoke@matki.co.uk](mailto:eauzonebespoke@matki.co.uk) or 01454 322888

1. BESPOKE BASE SURCHARGES

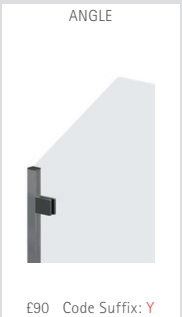
- For all Bespoke, use standard price of next nearest EPR model from opposite page and add the Base Surcharge first for a Bespoke panel, then the Shaping Surcharge if applicable
- For width and height changes within the maximum standard panel sizes stated on the opposite page, add the Base Surcharge only
- Add the Base surcharge for all the below panels on units involving Minimal frames, Recessed Channels and No frame options
- Add surcharge and suffix codes to the standard code shown opposite, e.g. EPR900A for a Bespoke Door



All prices exclude VAT

3. BESPOKE SHAPING SURCHARGES

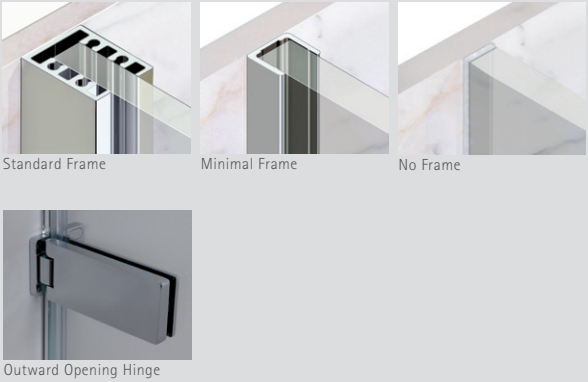
- For Cut-outs, Angles and Increased Height up to 2200mm\*
- Add surcharges and suffixes to the Bespoke Base
- Add multiple codes and surcharges according to the number of angles, cut-outs or increased height panel required, e.g. EPR800AHY would signify a Bespoke Door increased height with one angle required



\*Beyond 2200mm, please contact Matki



2. EPR BESPOKE FRAME AND HINGE OPTIONS



4. SPECIAL GLASS FINISHES - BESPOKE ONLY

- For Special Glass Finishes please add the below surcharge to the totals of the standard unit + Section 1 Bespoke Base Surcharge and if applicable Section 3 Bespoke Shaping Surcharge. Please state finish required on order



Colours and finishes are for representation purposes only

MEASURE AND INSTALLATION BY MATKI INSTALLATIONS

1. Measure	£195.00 ex VAT
2. Installation	£425.00 ex VAT
Outside Installation (Above 2200mm)	Contact Matki

Measure and Installation are priced separately

Please note, product prices and installation price may change after Measure dependent on site conditions and customer preferences

For areas outside mainland UK and Ireland, please contact Matki for pricing

See pages 56-57 for more details

VAT CALCULATED AT 20 %

QUINTESSE DESIGN WITH HINGED DOOR

FEATURES

- 10mm Clear Safety Glass (EN12150-1)
- Patented Non-Slip Hinge to ensure door stays firmly set in position
- Door opens past 90°
- EauZone Plus Quintesse can be fitted onto a Quintesse shower tray, special shower floor or directly onto a waterproof tiled floor
- Matki Glass Guard Easy Clean protection included in price

HOW TO ORDER

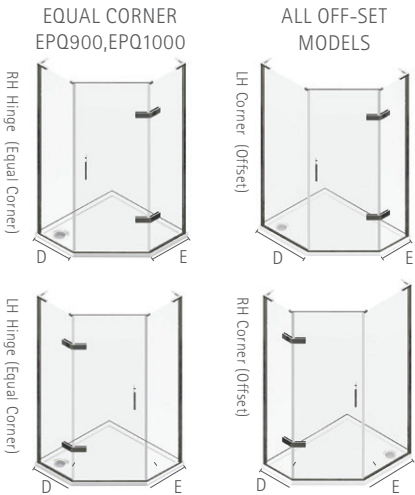
- Visit a Matki EauZone Plus Dealer to view displays and discuss models
- An EauZone Plus Configurator Tool is available on the Matki Website
- Available in sizes to fit on CLQ Quintesse Tray and in other sizes which will fit onto tiles or a Bespoke Matki Preference Tray, see page 101
- Installation by Matki Installations £575 ex VAT, see pages 56-57

FINISH

- Chrome/Polished Silver; For Polished Nickel, Brushed Nickel, Gold and Brushed Gold add £490.00. Please see pages 46 and 55 for details on finish variations
- Standard Clear Glass; For all Tinted colours add £1,080.00, for Low-Iron, Satin Frosted and Ultra-Black add £1,345.00 ex VAT



CONFIGURATIONS

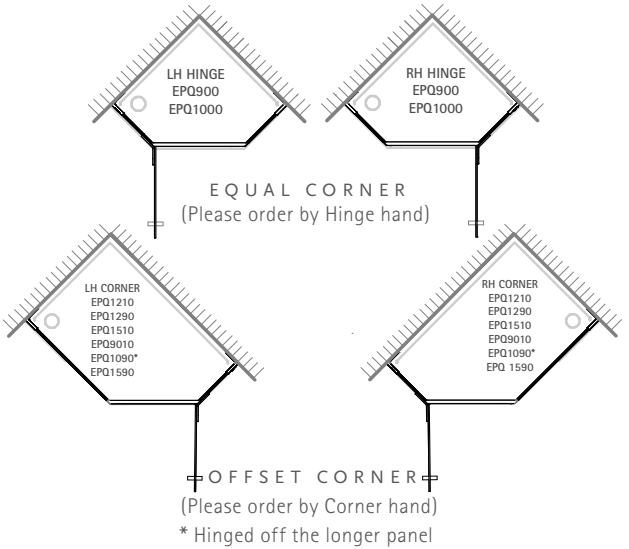


DIMENSIONS (MM)				PRICES		
MODEL CORNER	HINGE SIDE	CLOSURE SIDE	DIAGONAL	SUGGESTED TRAY MODEL	PRICE (EX. VAT)	PRICE (INC. VAT)
EPQ900	868 – 883	868 – 883	872 – 893	CLQ900	£1,835.00	£2,202.00
EPQ9010	868 – 883	968 – 983	943 – 964	ON TILES	£1,860.00	£2,232.00
EPQ1000	968 – 983	968 – 983	1014 – 1035	CLQ1000	£1,887.00	£2,264.40
EPQ1090	968 – 983	868 – 883	943 – 964	ON TILES	£1,862.00	£2,234.40
EPQ1290	868 – 883	1168 – 1183	1085 – 1106	CLQ1290	£1,935.00	£2,322.00
EPQ1210	968 – 983	1168 – 1183	1156 – 1177	ON TILES	£1,962.00	£2,354.40
EPQ1590	868 – 883	1468 – 1483	1297 – 1318	CLQ1590	£2,018.00	£2,421.60
EPQ1510	968 – 983	1468 – 1483	1368 – 1389	ON TILES	£2,045.00	£2,454.00

If ordering models EPQ900/1000 please state LH or RH hinge. If ordering models EPQ 9010/1290/1210/1590/1510/1090 please state LH or RH Corner. Door hinges from narrower panel on all models except EPQ1090

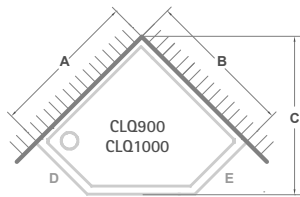


Choice of handles.  
Top shows 50mm Circular Cut-Out and three Glass Ball handles in White, Black or Satin. For Circular cut-out add £31.00 excl. VAT and for Satin, White or Black Glass Ball Handle add £57.00. Linear handle will be supplied if not otherwise specified.

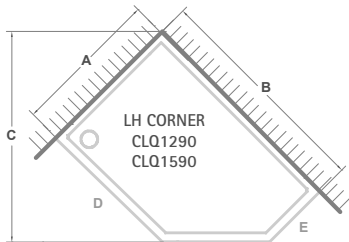




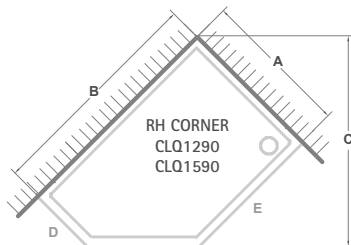
QUINTESSE 40 SHOWER TRAYS



EQUAL CORNER



OFFSET LH CORNER



OFFSET RH CORNER



DIMENSIONS (MM)						PRICES	
MODEL	A	B	C	D	E	PRICE (EX. VAT)	PRICE (INC. VAT)
CLQ40							
CLQ900	900	900	918	398	398	£315.00	£378.00
CLQ1000	1000	1000	1058	498	498	£348.00	£417.60
CLQ1290LH	900	1200	1129	698	398	£350.00	£420.00
CLQ1290RH*	900	1200	1129	398	698	£350.00	£420.00
CLQ1590LH	900	1500	1341	998	398	£382.00	£458.40
CLQ1590RH*	900	1500	1341	398	998	£382.00	£458.40

\* Waste is located in RH Corner for this model, other models have waste outlet in LH Corner, see illustrations

See also page 103 for Quintesse Shower Trays in any colour



TWIN ENTRANCE PANEL WITH  
2 X 1000MM BRACE BARS

FEATURES

- 10mm Clear Safety Glass (EN12150-1)
- EauZone Plus can be fitted onto a shower tray, shower floor or directly onto a waterproof tiled floor
- Matki Glass Guard Easy Clean protection included in price

HOW TO ORDER

- Visit a Matki EauZone Plus Dealer to view displays and discuss models
- An EauZone Plus Configurator Tool is available on the Matki Website
- Special oversize Brace Bars available on request at time of ordering
- Installation by Matki Installations £425 ex VAT, see pages 56-57

FINISH

- Chrome / Polished Silver (standard); For Polished Nickel, Brushed Nickel, Gold and Brushed Gold add £120.00. Please see pages 46 and 55 for details on finish variations
- Standard Clear Glass; For Tinted colours add £570.00, for Black Tinted please add 10% supplement to standard model price, for Low-Iron, Satin Frosted and Ultra-Black add £685.00 ex VAT

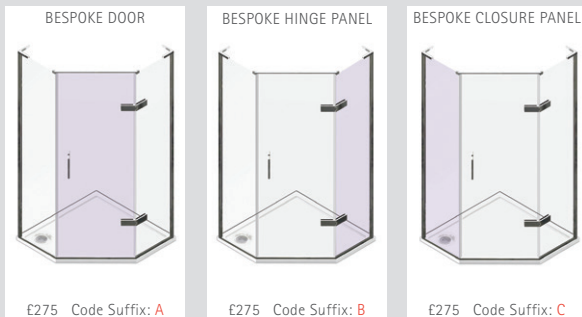
DIMENSIONS (MM)		PRICES	
MODEL	A	PRICE (EX. VAT)	PRICE (INC. VAT)
AST1000	950	£668.00	£801.60
AST1200	1150	£723.00	£867.60
AST1500	1450	£919.00	£1,102.80
BESPOKE	MAX 1500	SEE PAGE 83	

## HOW TO ORDER

- Review the Bespoke section (page 42-57) and discuss options with a Matki EauZone Plus Dealer
- Please see the Bespoke Order Timeline on page 57 for a guide on the Bespoke process
- Use Codes and Surcharges below for order and pricing
- Minimal frame, Recessed Channels and No frame are only available with Measure and Installation by Matki
- For more details and inspiration visit the Bespoke section of the Matki website at [www.matki.co.uk](http://www.matki.co.uk)
- Our Bespoke Department can be contacted on [eauzonebespoke@matki.co.uk](mailto:eauzonebespoke@matki.co.uk) or 01454 322888

### 1. BESPOKE BASE SURCHARGES

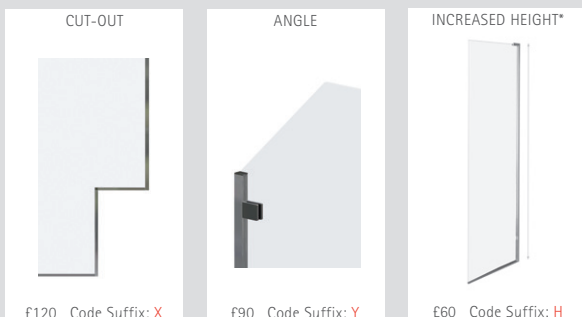
- For all Bespoke, use standard price of next nearest EPQ model from page 80 and add the Base Surcharge first for each Bespoke panel, then the Shaping Surcharge if applicable
- For width\* and height changes within the maximum standard panel sizes stated on page 80, add the Base Surcharge only
- Add the Base Surcharge for all the below panels on units involving Minimal Frames and Recessed Channels
- Add surcharge and suffix codes to the standard code shown on page 80 e.g. EPQ900ABC for a Bespoke Door, Hinge Panel and Closure Panel



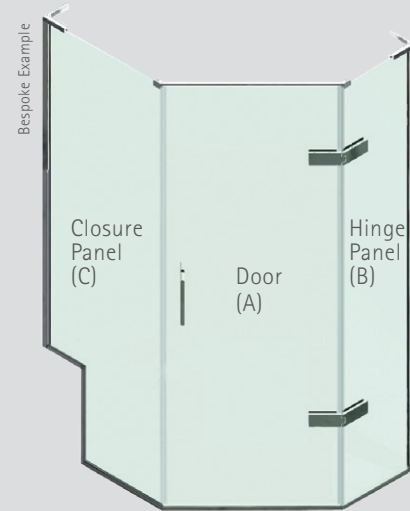
\*For non-standard door width add additional £125 ex VAT  
All prices exclude VAT

### 3. BESPOKE SHAPING SURCHARGES

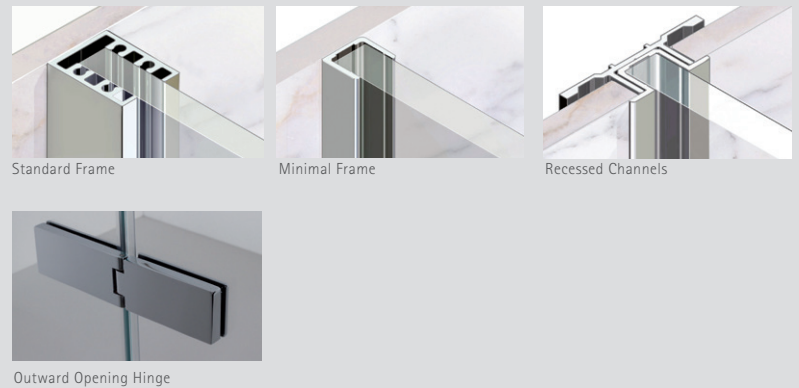
- For Cut-outs, Angles and Increased Height up to 2200mm\*
- Add surcharges and suffixes to the Bespoke Base
- Add multiple codes and surcharges according to the number of angles, cut-outs or number of increased height panels required, e.g. EPQ1290ABCHHHY would signify a Bespoke Door, Hinge Panel and Closure Panel increased height with one angle required



\*Beyond 2200mm, please contact Matki



### 2. EPQ BESPOKE FRAME AND HINGE OPTIONS



### 4. SPECIAL GLASS FINISHES - BESPOKE ONLY

- For Special Glass Finishes please add the below surcharge per enclosure to the totals of the standard unit + Section 1 Bespoke Base Surcharge and if applicable Section 3 Bespoke Shaping Surcharge. Please state finish required on order



Colours and finishes are for representation purposes only

### MEASURE AND INSTALLATION BY MATKI INSTALLATIONS

- |                                     |                |
|-------------------------------------|----------------|
| 1. Measure                          | £195.00 ex VAT |
| 2. Installation                     | £575.00 ex VAT |
| Outside Installation (Above 2200mm) | Contact Matki  |

Measure and Installation are priced separately

Please note, product prices and installation price may change after Measure dependent on site conditions and customer preferences

For areas outside mainland UK and Ireland, please contact Matki for pricing

See pages 56-57 for more details

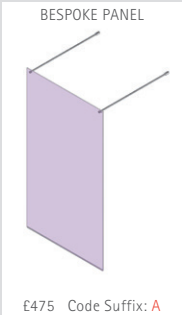


HOW TO ORDER

- Review the Bespoke section (page 42-57) and discuss options with a Matki EauZone Plus Dealer
- Please see the Bespoke Order Timeline on page 57 for a guide on the Bespoke process
- Use Codes and Surcharges below for order and pricing
- Minimal frame, Recessed Channels and No frame are only available with Measure and Installation by Matki
- For more details and inspiration visit the Bespoke section of the Matki website at [www.matki.co.uk](http://www.matki.co.uk)
- Our Bespoke Department can be contacted on [eauzonebespoke@matki.co.uk](mailto:eauzonebespoke@matki.co.uk) or 01454 322888

1. BESPOKE BASE SURCHARGES

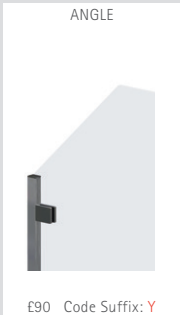
- For all Bespoke, use standard price of next nearest AST model from page 81 and add the Base Surcharge first for a Bespoke panel, then the Shaping Surcharge if applicable
- For width and height changes within the maximum standard panel sizes stated on page 81, add the Base Surcharge only
- Add the Base Surcharge for all the below panels on units involving Minimal Frames and Recessed Channels
- Add surcharge and suffix codes to the standard code shown on page 81 e.g. AST1200A for a Bespoke Panel



All prices exclude VAT

3. BESPOKE SHAPING SURCHARGES

- For Cut-outs, Angles and Increased Height up to 2200mm\*
- Add surcharges and suffixes to the Bespoke Base
- Add multiple codes and surcharges according to the number of angles, cut-outs or number of increased height panels required, e.g. AST1200AHY would signify a Bespoke Panel with increased height with one angle required



\*Beyond 2200mm, please contact Matki

2. SPECIAL GLASS FINISHES - BESPOKE ONLY

- For Special Glass Finishes please add the below surcharge to the totals of the standard unit + Section 1 Bespoke Base Surcharge and if applicable Section 3 Bespoke Shaping Surcharge. Please state finish required on order



Colours and finishes are for representation purposes only

MEASURE AND INSTALLATION BY MATKI INSTALLATIONS

1. Measure	£195.00 ex VAT
2. Installation	£425.00 ex VAT
Outsize Installation (Above 2200mm)	Contact Matki

Measure and Installation are priced separately  
Please note, product prices and installation price may change after Measure dependent on site conditions and customer preferences  
For areas outside mainland UK and Ireland, please contact Matki for pricing  
See pages 56-57 for more details

## FEATURES

- 10mm Clear Safety Glass (EN12150-1)
- Matki Glass Guard Easy Clean protection included in price
- EWP1200 and wider come with Brace Bar (1000mm adjustable)
- EHW Hinge Panel for configuration with EWP Wet Room Panels\*
- EWB comes complete with integrated shower tray giving a seamless silicon-free joint between glass and tray

## HOW TO ORDER

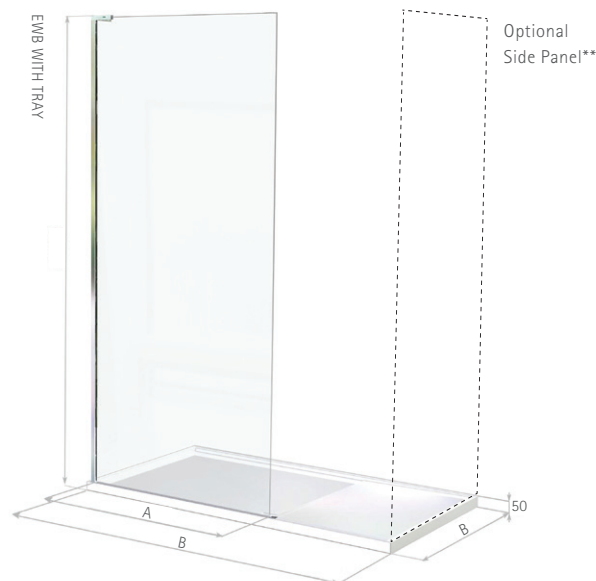
- Visit a Matki EauZone Plus Dealer to view displays and discuss models
- An EauZone Plus Configurator Tool is available on the Matki Website
- Installation by Matki Installations £350 ex VAT up to 900mm wide; £425 ex VAT up to 1500mm, see pages 56-57

## FINISH

- EWP/EWB: Chrome / Mirror Polished Stainless Steel. EWB: Chrome / Polished Silver (standard). For Polished Nickel, Brushed Steel, Matt Black (EWP only) and Gold add £225 excluding VAT. Brushed Gold available with Bespoke Minimal, Recessed and No Frame options only
- EWP/EWB/EHW: Standard Clear Glass; for panels up to 965mm, all Tinted colours add £295, for Low-Iron, Satin Frosted and Ultra Black add £410 ex VAT. For panels over 965mm add £445 and £560 ex VAT respectively, see pages 46 and 55 for details on finish variations



Requires wall brace, please add surcharge of £95 when fitted with EWP1100 or smaller



DIMENSIONS (MM)		PRICES	
MODEL	A	PRICE (EX. VAT)	PRICE (INC. VAT)
EWP (10mm)			
EWP200	204 - 215	£491.00	£589.20
EWP250	254 - 268	£502.00	£602.40
EWP300	304 - 318	£514.00	£616.80
EWP350	354 - 368	£525.00	£630.00
EWP400	404 - 418	£536.00	£643.20
EWP450	454 - 468	£541.00	£649.20
EWP500	504 - 518	£548.00	£657.60
EWP550	554 - 568	£554.00	£664.80
EWP600	604 - 618	£559.00	£670.80
EWP650	650 - 665	£566.00	£679.20
EWP700	710 - 725	£574.00	£688.80
EWP750	750 - 765	£582.00	£698.40
EWP800	785 - 799	£594.00	£712.80
EWP850	850 - 865	£605.00	£726.00
EWP900*	893 - 907	£610.00	£732.00
EWP950	950 - 965	£620.00	£744.00
EWP1000	993 - 1007	£627.00	£752.40
EWP1100	1093 - 1107	£644.00	£772.80
EWP1200	1185 - 1195	£684.00	£820.80
EWP1300	1293 - 1307	£764.00	£916.80
EWP1400	1393 - 1407	£798.00	£957.60
EWP1500	1493 - 1507	£859.00	£1,030.80
BESPOKE	MAX 1500		

\* Models available with Black Tinted glass as Standard at a 15% supplement

Please specify hand when ordering, illustrations show LH EWH and RH Entrance EWB.  
EWP is unhandred. If installing with a shower tray please check sizes are compatible.

\*\* Optional side panel models EWB800SP £594.00 excluding VAT and EWB900SP £610.00 excluding VAT

DIMENSIONS (MM)			PRICES	
MODEL EWB WITH TRAY	A	B	PRICE (EX. VAT) WITH TRAY	PRICE (INC. VAT) WITH TRAY
EWB1580	905 - 920	1500x800	£984.00	£1,180.80
EWB1590	905 - 920	1500x900	£987.00	£1,184.40
EWB1780	1055 - 1070	1700x800	£1,057.00	£1,268.40
EWB1790	1055 - 1070	1700x900	£1,068.00	£1,281.60

DIMENSIONS (MM)		PRICES	
MODEL EHW HINGED PANEL	A	PRICE (EX. VAT)	PRICE (INC. VAT)
EHW300HP	313	£480.00	£576.00



HOW TO ORDER

- Review the Bespoke section (page 42-57) and discuss options with a Matki EauZone Plus Dealer
- Please see the Bespoke Order Timeline on page 57 for a guide on the Bespoke process
- Use Codes and Surcharges below for order and pricing
- Minimal frame, Recessed Channels and No frame are only available with Measure and Installation by Matki
- The EWB Wet Room Panel with Tray can have Bespoke height and angles but no cut-outs, nor width changes
- For more details and inspiration visit the Bespoke section of the Matki website at [www.matki.co.uk](http://www.matki.co.uk)
- Our Bespoke Department can be contacted on [eauzonebespoke@matki.co.uk](mailto:eauzonebespoke@matki.co.uk) or 01454 322888

1. BESPOKE BASE SURCHARGES

- For all Bespoke, use standard price of next nearest model from opposite page and add the Base Surcharge first for each Bespoke panel, then the Shaping Surcharge if applicable
- For width and height changes within the maximum standard panel sizes stated on page opposite, add the Base Surcharge only
- Add the Base surcharge for all the below panels on units involving Minimal frames, Recessed Channels and No frame options
- Add surcharge and suffix codes to the standard code shown opposite, e.g. EWP900A for a Bespoke Fixed Panel

BESPOKE FIXED PANEL  
Up to 1000mm

£200 Code Suffix: A

BESPOKE FIXED PANEL  
Up to 1500mm

£350 Code Suffix: A

All prices exclude VAT

3. BESPOKE SHAPING SURCHARGES

- For Cut-outs, Angles and Increased Height up to 2200mm\*
- Add surcharges and suffixes to the Bespoke Base
- Add multiple codes and surcharges according to the number of angles, cut-outs or number of increased height panels required, e.g. EWP1200AHY would signify a Bespoke Fixed Panel with increased height with one angle required

CUT-OUT

£120 Code Suffix: X

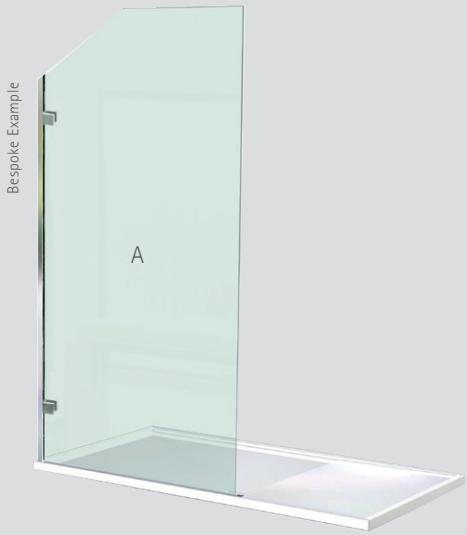
ANGLE

£90 Code Suffix: Y

INCREASED HEIGHT\*

£60 Code Suffix: H

\*Beyond 2200mm, please contact Matki



2. BESPOKE FRAME OPTIONS



4. SPECIAL GLASS FINISHES - BESPOKE ONLY

- For Special Glass Finishes please add the below surcharge to the totals of the standard unit + Section 1 Bespoke Base Surcharge and if applicable Section 3 Bespoke Shaping Surcharge. Please state finish required on order
- Below special glass finishes apply only to EWP and EWB models. EWT is only available in Low-iron as Standard

Bronze Tinted  
£95 ex. VAT

Green Tinted  
£95 ex. VAT

Blue Tinted  
£95 ex. VAT

Black Tinted  
£95 ex. VAT

Satin/Frosted  
£210 ex. VAT

Low-iron  
£210 ex. VAT

Ultra Black  
£210 ex. VAT

Colours and finishes are for representation purposes only

MEASURE AND INSTALLATION BY MATKI INSTALLATIONS

1. Measure	£195.00 ex VAT
2. Installation up to 900mm wide	£350.00 ex VAT
3. Installation above 900mm wide	£425.00 ex VAT
Outsize Installation (Above 2200mm)	Contact Matki

Measure and Installation are priced separately

Please note, product prices and installation price may change after Measure dependent on site conditions and customer preferences

For areas outside mainland UK and Ireland, please contact Matki for pricing

See pages 56-57 for more details

VAT CALCULATED AT 20 %

FEATURES

- 12mm Ultra Clear/Low Iron Glass (EN12150-1)
- Matki Glass Guard Easy Clean protection included in price
- Traditional and Curved Towel Rails have rails outside and inside as Standard, available single-sided on request.

HOW TO ORDER

- Visit a Matki EauZone Plus Dealer to view displays and discuss models
- An EauZone Plus Configurator Tool is available on the Matki Website
- Installation by Matki Installations £425 ex VAT, see pages 56-57

FINISH

- Chrome / Mirror Polished Stainless Steel (standard). For Polished Nickel, Brushed Steel and Gold add £225 excluding VAT
- Please see pages 46 and 55 for details on finish variations

DIMENSIONS (MM)                      PRICES

MODEL	A	PRICE (EX. VAT)	PRICE (INC. VAT)
EWT (12mm)			
EWT900	890 - 905	£754.00	£904.80
EWT1000	990 - 1005	£847.00	£1,016.40
EWT1200	1190 - 1205	£970.00	£1,164.00



TOWEL RAIL OPTIONS

FEATURES

- EWT 12mm Safety Glass Wet Room Panel can be fitted with a choice of towel rails
- Linear and Linear Hardwood Towel Rails are for the outside of the panel only
- Traditional and Curved Towel Rails have rails on the outside and the inside, available as single sided on request

HOW TO ORDER

- Select the EWT panel size and add suffix RAIL along with the Towel Rail code, add Towel Rail price to EWT

PRICES

MODEL	PRICE (EX. VAT)	PRICE (INC. VAT)
LTR700P*	£235.00	£282.00
LWT700P*	£235.00	£282.00
TTRDS*	£350.00	£420.00
CTRDS*	£350.00	£420.00

\* Supply with Matki glass only



Linear Towel Rail - LTR



Linear Hardwood Towel Rail - LWT



Curved Towel Rail - CTRDS



Traditional Towel Rail - TTRDS

Additional £110 ex VAT surcharge for towel rails in special finishes

See page 50 for more information on the towel rails



FEATURES

- 10mm Clear Curved Safety Glass (EN12150-1)
- Matki Glass Guard Easy Clean protection included in price
- Radius-20 precision curved glass has a unique and harmonious appearance giving splash protection with no joints or bonds
- Radius-20 is unhandled

HOW TO ORDER

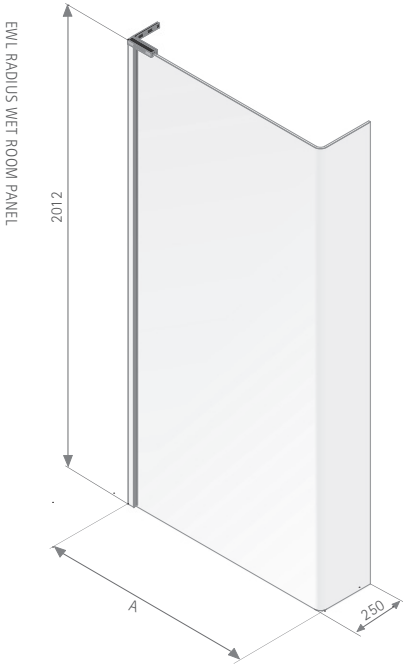
- Visit a Matki EauZone Plus Dealer to view displays and discuss models
- For a Preference Tray (MP) with limb to accommodate return section of panel, please order EWL and state sizes as per MP tray on page 99, adding a 15% supplement
- Installation by Matki Installations £425 ex VAT, see pages 56-57

FINISH

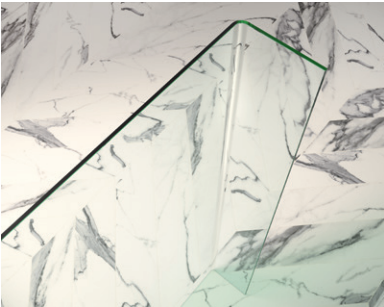
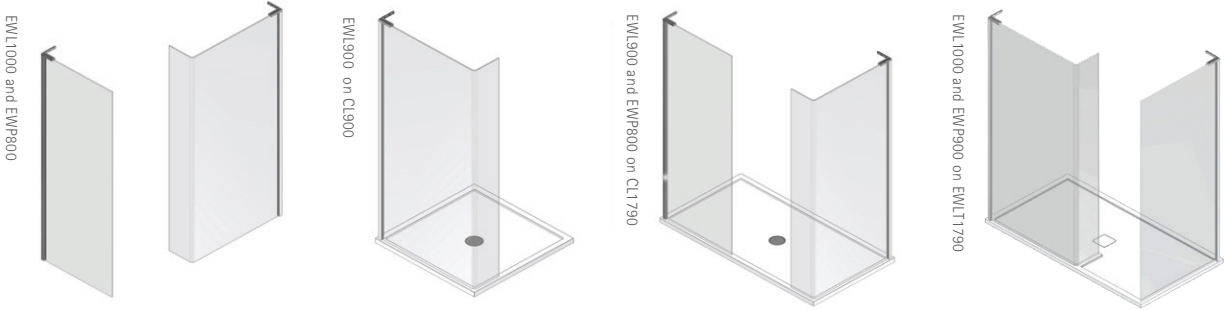
- Chrome / Mirror Polished Stainless Steel (standard)  
For Brushed Steel, Polished Nickel and Gold add £225 excluding VAT
- Please see pages 46 and 55 for details on finish variations

DIMENSIONS (MM)                      PRICES

MODEL	A	PRICE (EX. VAT)	PRICE (INC. VAT)
EWL (10mm)			
EWL800	754 – 764	£1,353.00	£1,623.60
EWL900	854 – 864	£1,402.00	£1,682.40
EWL1000	954 – 964	£1,461.00	£1,753.20



EWL SETUP COMBINATIONS:



Close up of Radius-20 Wet Room Panel

NEW!

HINGED DOOR WITH RADIUS 20 PANEL FOR CORNER

FEATURES

- Single piece Radius 20 10mm Clear Curved Glass Side Panel
- 10mm Clear Safety Glass Door (EN12150-1)
- Patented Non-Slip Hinge to ensure door stays firmly set in position
- EauZone Plus can be fitted onto a shower tray, shower floor or directly onto a waterproof tiled floor
- Very high quality solid Brass fittings and high lustre Aluminium wall mounts available in choice of finishes
- Matki Glass Guard Easy Clean protection included in price

HOW TO ORDER

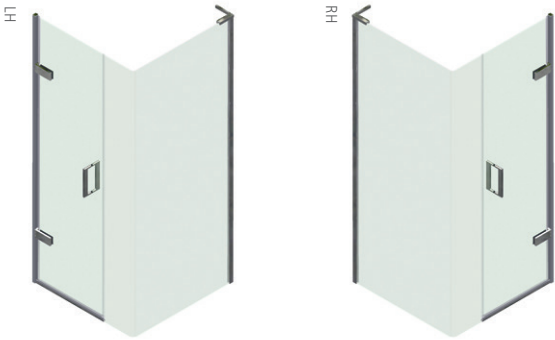
- Visit a Matki EauZone Plus Dealer to view displays and discuss models
- Installation by Matki Installations £575 ex VAT, see pages 56-57

FINISH

- Chrome/Polished Silver; For Polished Nickel, Brushed Nickel, Gold and Brushed Gold add £425.00 ex VAT. Please see pages 46 and 55 for details on finish variations
- Standard Clear Glass only

DIMENSIONS (MM)				PRICES	
MODEL DOOR	A+B	A	B	PRICE (EX. VAT)	PRICE (INC. VAT)
EWCL900	870 – 885	650	250	£1,272.00	£1,526.40
EWCL1000	970 – 985	750	250	£1,287.00	£1,544.40
EWCL1100	1070 – 1085	850	250	£1,306.00	£1,567.20
EWCL1200	1170 – 1185	950	250	£1,340.00	£1,608.00

DIMENSIONS (MM)		PRICES	
MODEL SIDE PANEL	C	PRICE (EX. VAT)	PRICE (INC. VAT)
EWL800SP	770 – 785	£1,310.00	£1,572.00
EWL900SP	870 – 885	£1,364.00	£1,636.80
EWL1000SP	970 – 985	£1,391.00	£1,669.20



HANDLE OPTIONS:



Linear handle will be supplied if not otherwise specified.



## NEW!

### HINGED DOOR WITH HINGE PANEL AND RADIUS 20 PANEL FOR CORNER

#### FEATURES

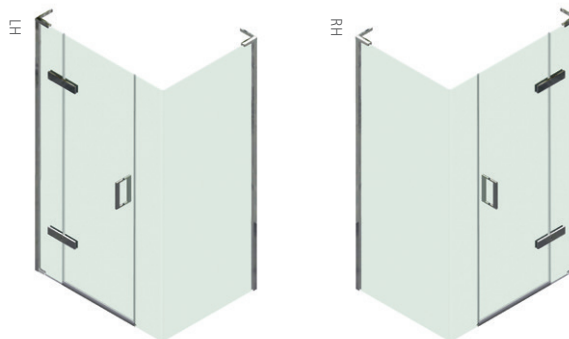
- Single piece Radius 20 10mm Clear Curved Glass Side Panel
- 10mm Clear Safety Glass Hinge Panel and Door (EN12150-1)
- Patented Non-Slip Hinge to ensure door stays firmly set in position
- EauZone Plus can be fitted onto a shower tray, shower floor or directly onto a waterproof tiled floor
- Very high quality solid Brass fittings and high lustre Aluminium wall mounts available in choice of finishes
- Matki Glass Guard Easy Clean protection included in price

#### HOW TO ORDER

- Visit a Matki EauZone Plus Dealer to view displays and discuss models
- Alternative door and panel combinations are available at the same price for some model sizes. The standard for each size is listed in the table below and it is possible to mix and match panel and door combinations from the diagram opposite. The total of the Panel and Door combinations must add up to the total for the chosen model, i.e. EHCL1200 (A) 250 + (B) 700 + (C) 250 = 1200
- Installation by Matki Installations £650 ex VAT, see pages 56-57

#### FINISH

- Chrome/Polished Silver; For Polished Nickel, Brushed Nickel, Gold and Brushed Gold add £425.00 ex VAT. Please see pages 46 and 55 for details on finish variations
- Standard Clear Glass only



DIMENSIONS (MM)					PRICES	
MODEL RECESS	A+B	A	B	C	PRICE (EX. VAT)	PRICE (INC. VAT)
EHCL1200	1170 – 1185	250	700	250	£1,474.00	£1,768.80
EHCL1300	1270 – 1285	350	700	250	£1,500.00	£1,800.00
EHCL1400	1370 – 1385	450	700	250	£1,526.00	£1,831.20
EHCL1500	1470 – 1485	550	700	250	£1,552.00	£1,862.40
EHCL1600	1570 – 1585	550	800	250	£1,578.00	£1,893.60

DIMENSIONS (MM)		PRICES	
MODEL SIDE PANEL	D	PRICE (EX. VAT)	PRICE (INC. VAT)
EWL800SP	770 – 785	£1,310.00	£1,572.00
EWL900SP	870 – 885	£1,364.00	£1,636.80
EWL1000SP	970 – 985	£1,391.00	£1,669.20

#### HANDLE OPTIONS:



Linear



Linear Hardwood



Curved



Traditional

Linear handle will be supplied if not otherwise specified.

WET ROOM PANELS WITH HINGE PANELS  
(EWPH AND EWH)

FEATURES

- 10mm Clear Safety Glass (EN12150-1)
- Matki Glass Guard Easy Clean protection included in price
- Hinge panel opens inwards through 180° as Standard, for outward opening please specify

FINISH

- Chrome/Polished Silver (standard). For Polished Nickel, Brushed Nickel and Gold add £405.00 excluding VAT. Brushed Gold available with Bespoke Minimal, Recessed and No Frame options only. For special finishes on an optional side panel add £225
- Standard Clear Glass; For all Tinted colours add £670.00, for Low-Iron, Satin Frosted and Ultra Black add £785.00 ex VAT. For optional side panel in tinted add £295 for Low Iron, Satin Frosted and Ultra Black add £410
- Please see pages 46 and 55 for details on finish variations

HOW TO ORDER

- Installation by Matki Installations £425 ex VAT or £500 ex VAT with Side Panel, see pages 56-57

DIMENSIONS (MM)		PRICES	
MODEL EWPH WITH HINGED PANEL	A	PRICE (EX. VAT)	PRICE (INC. VAT)
EWPH1200	695 - 710 + 440	£1,068.00	£1,281.60
EWPH1500	915 - 930 + 490	£1,136.00	£1,363.20
EWPH1700	1065 - 1080 + 490	£1,192.00	£1,430.40

DIMENSIONS (MM)			PRICES	
MODEL EWH WITH TRAY AND HINGED PANEL	A	B	PRICE (EX. VAT)	PRICE (INC. VAT)
EWH1580	905 - 920	1500x800	440	£1,848.00 £2,217.60
EWH1590	905 - 920	1500x900	490	£1,906.00 £2,287.20
EWH1780	1055 - 1070	1700x800	490	£1,962.00 £2,354.40
EWH1790	1055 - 1070	1700x900	540	£2,048.00 £2,457.60

- Integrated Tray adds extra security and a silicon-free seal
- Optional Side Panel models EWB800SP £594.00 ex VAT and EWB900SP £610.00 ex VAT





HOW TO ORDER

- Review the Bespoke section (page 42-57) and discuss options with a Matki EauZone Plus Dealer
- Please see the Bespoke Order Timeline on page 57 for a guide on the Bespoke process
- Use Codes and Surcharges below for order and pricing
- Ultra Bespoke framing is only available on EWPH and only with Measure and Installation by Matki Installations
- The EWH Wet Room Panel with Tray can have Bespoke height and angles but no cut-outs, nor fixed panel width changes
- For more details and inspiration visit the Bespoke section of the Matki website at [www.matki.co.uk](http://www.matki.co.uk)
- Our Bespoke Department can be contacted on [eauzonebespoke@matki.co.uk](mailto:eauzonebespoke@matki.co.uk) or 01454 322888

1. BESPOKE BASE SURCHARGES

- For all Bespoke, use standard price of next nearest model from opposite page and add the Base Surcharge first for each Bespoke panel, then the Shaping Surcharge if applicable
- For width and height changes within the maximum standard panel sizes stated on opposite page, add the Base Surcharge only
- Add the Base surcharge for all the below panels on units involving Minimal frames, Recessed Channels and No frame options
- Add surcharge and suffix codes to the standard code shown opposite, e.g. EWH900A for a Bespoke Fixed Panel or EWHB for a Bespoke Hinge Panel

BESPOKE FIXED PANEL

£325 Code Suffix: A

BESPOKE HINGE PANEL (EWH only)

£250 Code Suffix: B

All prices exclude VAT

3. BESPOKE SHAPING SURCHARGES

- For Cut-outs, Angles and Increased Height up to 2200mm\*
- Add surcharges and suffixes to the Bespoke Base
- Add multiple codes and surcharges according to the number of angles, cut-outs or number of increased height panels required, e.g. EWH1200AHY would signify a Bespoke Fixed Panel with increased height with one angle required

CUT-OUT

£120 Code Suffix: X

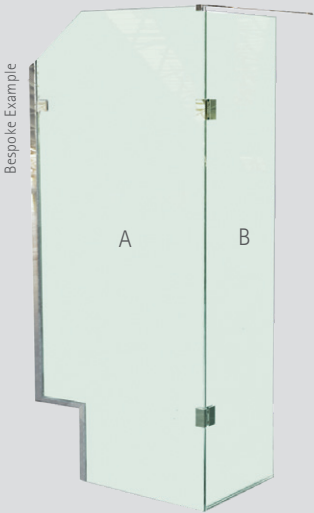
ANGLE

£90 Code Suffix: Y

INCREASED HEIGHT\*

£60 Code Suffix: H

\*Beyond 2200mm, please contact Matki



2. BESPOKE FRAME OPTIONS



4. SPECIAL GLASS FINISHES - BESPOKE ONLY

- For Special Glass Finishes please add the below surcharge per unit to the totals of the standard unit + Section 1 Bespoke Base Surcharge and if applicable Section 3 Bespoke Shaping Surcharge. Please state finish required on order

Bronze Tinted  
£95 ex. VAT

Green Tinted  
£95 ex. VAT

Blue Tinted  
£95 ex. VAT

Black Tinted  
£95 ex. VAT

Satin/Frosted  
£210 ex. VAT

Low-iron  
£210 ex. VAT

Ultra Black  
£210 ex. VAT

Colours and finishes are for representation purposes only

MEASURE AND INSTALLATION BY MATKI INSTALLATIONS

1. Measure	£195.00 ex VAT
2. Installation without Side Panel	£425.00 ex VAT
3. Installation with Side Panel	£500.00 ex VAT
Outsize Installation (Above 2200mm)	Contact Matki

Measure and Installation are priced separately  
Please note, product prices and installation price may change after Measure dependent on site conditions and customer preferences  
For areas outside mainland UK and Ireland, please contact Matki for pricing  
See pages 56-57 for more details

WALL HINGED BATH SCREEN(EPS) AND TWO  
PANEL BATH SCREEN (EPB) -OUTWARD OPENING

FEATURES

- 10mm Clear Safety Glass (EN12150-1)
- Patented non-slip hinge to ensure screen stays firmly in position
- Matki Glass Guard Easy Clean protection included in price
- Designed for flat-top baths

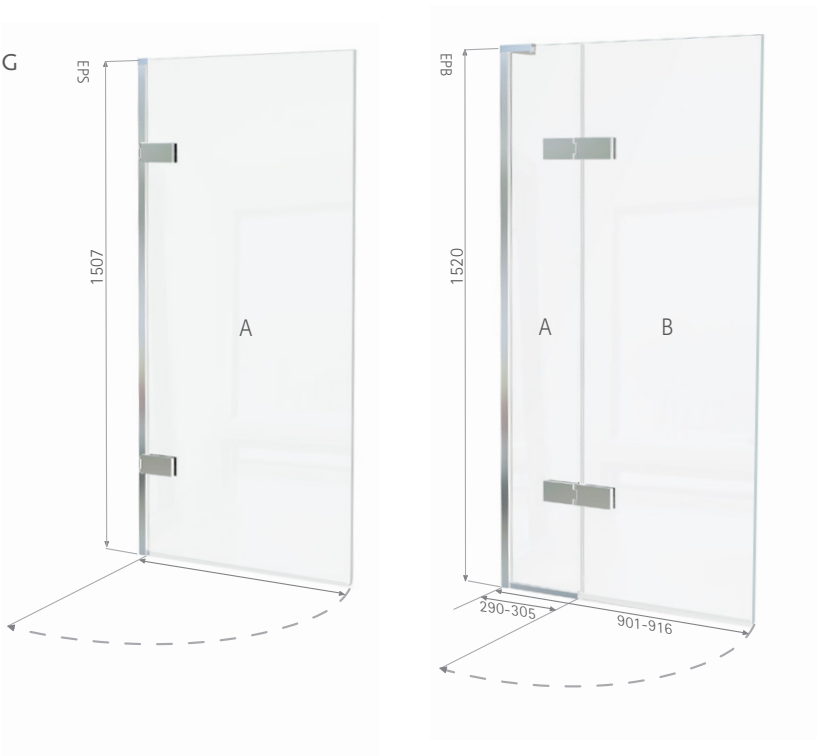
HOW TO ORDER

- Visit a Matki EauZone Plus Dealer to view displays and discuss models
- An EauZone Plus Configurator Tool is available on the Matki Website
- Hinged Panel Bath Screens are handed, please specify *left* or *right* when ordering, illustrations show LH hinge
- Installation by Matki Installations £350 ex VAT Single Panel, £425 ex VAT Two Panel, see pages 56-57

FINISH

- Chrome/Polished Silver; For Polished Nickel, Brushed Nickel and Gold add £225 for EPS, £405 for EPB ex VAT. Brushed Gold available with Bespoke Minimal, Recessed and No Frame options only. Please see pages 46 and 55 for details on finish variations
- Standard Clear Glass; For Tinted colours add £265 (EPS) £435 (EPB), for Low-Iron, Satin/Frosted and Ultra-Black add £320 (EPS) and £490 (EPB), all prices ex VAT

DIMENSIONS (MM)		PRICES	
MODEL	A/A+B	PRICE (EX. VAT)	PRICE (INC. VAT)
EPS700	722 – 737	£593.00	£711.60
EPS800	822 – 837	£647.00	£776.40
EPB900	901 – 916	£822.00	£986.40



DOUBLE PANEL BATH SCREEN -INWARDS  
OPENING (EPD)

FEATURES

- 10mm Clear Safety Glass (EN12150-1)
- Matki Glass Guard Easy Clean protection included in price
- On 1000 model folding panel folds flat against fixed panel
- Designed for flat-top baths

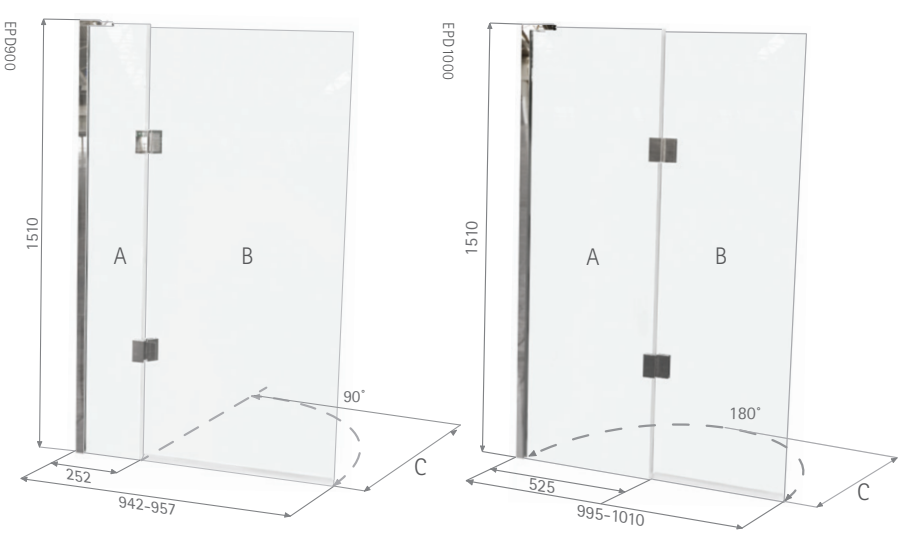
HOW TO ORDER

- Visit a Matki EauZone Plus Dealer to view displays and discuss models
- An EauZone Plus Configurator Tool is available on Matki Website
- Not handed. Inward opening as Standard. For outward opening please specify clearly on order
- Installation by Matki Installations £425 ex VAT, see pages 56-57

FINISH

- Chrome/Polished Silver; For Polished Nickel, Brushed Nickel, Gold and Matt Black add £405 ex VAT. Brushed Gold available with Bespoke Minimal, Recessed and No Frame options only. Please see pages 46 and 55 for details on finish variations
- Standard Clear Glass; For all Tinted colours add £435, for Low-Iron, Satin Frosted and Ultra Black add £490.00 ex VAT.

DIMENSIONS (MM)					PRICES	
MODEL	A + B	A	B	C	PRICE (EX. VAT)	PRICE (INC. VAT)
EPD900	942 – 957	252	690	723	£649.00	£778.80
EPD907	942 – 957	332	610	643	£649.00	£778.80
EPD1000	995 – 1010	525	470	504	£663.00	£795.60





HOW TO ORDER

- Review the Bespoke section (page 42-57) and discuss options with a Matki EauZone Plus Dealer
- Please see the Bespoke Order Timeline on page 57 for a guide on the Bespoke process
- Use Codes and Surcharges below for order and pricing
- Ultra Bespoke framing is only available with Measure and Installation by Matki Installations
- For more details and inspiration visit the Bespoke section of the Matki website at [www.matki.co.uk](http://www.matki.co.uk)
- Our Bespoke Department can be contacted on [eauzonebespoke@matki.co.uk](mailto:eauzonebespoke@matki.co.uk) or 01454 322888

1. BESPOKE BASE SURCHARGES

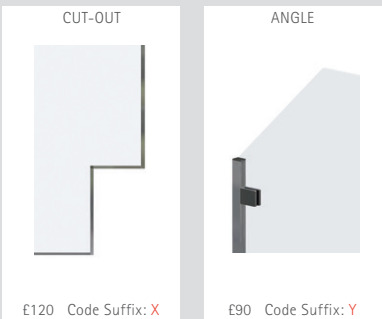
- For all Bespoke, use standard price of next nearest model from opposite page and add the Base Surcharge first for each Bespoke panel, then the Shaping Surcharge if applicable
- For width and height changes within the maximum standard panel sizes stated opposite, add the Base Surcharge only
- Add the Base surcharge for all the below panels on units involving Minimal frames, Recessed Channels and No frame options
- Add surcharge and suffix codes to the standard code shown opposite, e.g. EPB900A for a Bespoke Fixed Panel or EPB900B for a Bespoke Hinge Panel



All prices exclude VAT

3. BESPOKE SHAPING SURCHARGES

- For Cut-outs and Angles
- Add surcharges and suffixes to the Bespoke Base
- Add multiple codes and surcharges according to the number of angles, cut-outs or number of increased height panels required, e.g. EPB900AX would signify a Bespoke Fixed Panel with Cut-Out



\*Beyond 2200mm, please contact Matki



2. BESPOKE FRAME OPTIONS



4. SPECIAL GLASS FINISHES - BESPOKE ONLY

- For Special Glass Finishes please add the below surcharge per bath screen to the totals of the standard unit + Section 1 Bespoke Base Surcharge and if applicable Section 3 Bespoke Shaping Surcharge. Please state finish required on order



Colours and finishes are for representation purposes only  
All prices listed are excluding VAT

MEASURE AND INSTALLATION BY MATKI INSTALLATIONS

1. Measure	£195.00 ex VAT
2. Installation Single Panel	£350.00 ex VAT
3. Installation Two Panel	£425.00 ex VAT
Outsize Installation	Contact Matki

Measure and Installation are priced separately  
Please note, product prices and installation price may change after Measure dependent on site conditions and customer preferences  
For areas outside mainland UK and Ireland, please contact Matki for pricing  
See pages 56-57 for more details

VAT CALCULATED AT 20 %







## SHOWER TRAYS AND FLOORS BY MATKI

Complete luxury in the Shower demands a stunning foundation.

Matki have manufactured Shower Trays in Cornwall since 1979.

Beginning life within a small boat building factory in Penryn, we now operate a 60000 sq. ft purpose-built factory in Redruth.

All our Shower Trays and Floors are hand built and hand finished with precise attention given to the surface finish; robust coatings are then applied using state of the art machinery ensuring perfect durability.

Each important phase of manufacture is carried out by experienced team members, some of whom have worked with Matki since the very early days. With this experience comes an expert knowledge of our products and our quality demands - each Shower Tray that leaves the Redruth factory is inspected with expert eyes.

Matki offer a wide choice of shapes, sizes, styles and colours of Shower Tray including bespoke, designed to work harmoniously with Matki Shower Enclosures.

### PEACE OF MIND

All Matki Shower Trays and Floors use surface materials which are chosen for their longevity, durability and natural non-slip qualities.

Matt White Continental, Preference and Slate are all Certified Anti Slip Rated using the DIN51097 standard framework.





## CONTINENTAL

The low-profile Continental Shower Tray provides a modern look with strong and durable properties built from Stone-Resin and double layered Acrylic. Square, rectangular, curved and Quintesse shapes are available to order in a wide range of sizes. There is also a 30mm Continental Shower Floor, creating a seamless look for a flush-to-floor style.

Continental is durability tested far beyond industry standard to withstand 1.2 tonnes







## PREFERENCE

Made from the Matki Preference Solid Surface formula rich in ground Marble, Preference Shower Trays and Floors have a luxurious quality each taking up to 6 hours to perfect and hand-polish.

For fitting showering spaces into challenging layouts, bespoke sizes with cut-outs can be produced, catering for internal pipe chases, alcoves and around-bath setups.

Preference Shower Trays and Floors are available in any shape and size up to 2050mm by 1150mm and the central position of the waste can be shifted to avoid joists and other obstructions.



## SLATE

Modelled on natural slate, the Slate Shower Tray and Floor have an authentic feel harmonising beautifully with natural stone schemes in the bathroom - it is even possible to colour match to surrounding tiling.

Slate Shower Floors can be made to measure in square or rectangular shapes in any size up to 2000mm x 1000mm with a central waste which can be offset dependent on size ordered.



## UNIVERSAL

Available in any colour to order, our team can use RAL/Pantone charts, tile samples or even paint names to match colours to the wider bathroom design scheme.

Square, rectangle, curved and Quintesse shapes are available to order - the Universal Linear adds a note of difference to the collection with a uniquely designed linear waste cover.



## FINE LINE

Striking a fineline between aesthetic and practicality. With a slightly increased height of 60mm, the Fineline brings added peace of mind and a deeper showering area.

Manufactured from high quality Stone Resin with a double layer acrylic cap.

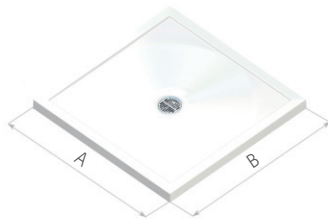
## SQUARE & RECTANGULAR SHOWER TRAYS



CL900

### CONTINENTAL 40

- Low Profile 40mm, 10mm Raised Threshold
- Stone resin, double acrylic cap
- Centre high-flow shower waste with Chrome flange and Stainless Steel grill
- Raised Tray version optional with adjustable legs and front panel in white only. Adds 100mm to height. Recess add £42, Corner add £79 ex VAT
- Available in White, Matt White\*\*, Black, Pergamon\*\*
- Matt White is certified DIN51097 A Anti Slip



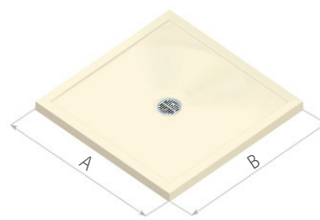
A	B	CL	PRICE (EX. VAT)	PRICE (INC. VAT)
800	800	CL800	£205.00	£246.00
900	800	CL9080	£228.00	£273.60
900	900	CL900	£240.00	£288.00
1000	800	CL1080	£249.00	£298.80
1000	900	CL1090	£254.00	£304.80
1000	1000	CL1000	£310.00	£372.00
1100	800	CL1180	£263.00	£315.60
1100	900	CL1190	£268.00	£321.60
1200	700	CL1270	£260.00	£312.00
1200	760	CL1276	£262.00	£314.40
1200	800	CL1280	£264.00	£316.80
1200	900	CL1290	£304.00	£364.80
1200	1000	CL1210**	£332.00	£398.40
1300	800	CL1380	£324.00	£388.80
1300	900	CL1390	£335.00	£402.00
1400	800	CL1480	£343.00	£411.60
1400	900	CL1490	£362.00	£434.40
1500	800	CL1580	£384.00	£460.80
1500	900	CL1590	£387.00	£464.40
1600	800	CL1680	£397.00	£476.40
1600	900	CL1690	£403.00	£483.60
1700	800	CL1780	£411.00	£493.20
1700	900	CL1790	£435.00	£522.00
1800	900	CL1890**	£460.00	£552.00



UL1290

### UNIVERSAL 40

- Low Profile 40mm, 10mm Raised Threshold
- Stone resin, gel coating
- Centre high-flow shower waste with Chrome flange and Stainless Steel grill
- UL900, UL1280, UL1290 and UL1680 available in semi matt finish
- Raised Tray version optional with adjustable legs and front panel in colour to match tray. Adds 100mm to height. Recess add £42, Corner add £90 ex VAT
- Available in any colour via RAL or sample matching



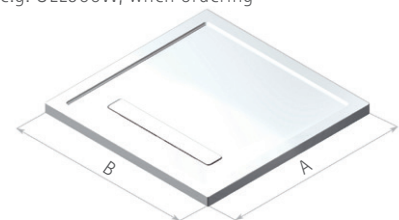
A	B	UL	PRICE (EX. VAT)	PRICE (INC. VAT)
760	760	UL760	£246.00	£295.20
800	800	UL800	£255.00	£306.00
900	900	UL900	£290.00	£348.00
1200	800	UL1280	£314.00	£376.80
1200	900	UL1290	£354.00	£424.80
1400	900	UL1490	£412.00	£494.40
1500	900	UL1590	£437.00	£524.40
1600	800	UL1680	£447.00	£536.40



ULL1290

### UNIVERSAL LINEAR

- Low Profile 40mm, 10mm Raised Threshold
- Stone resin, gel coating
- Modern Linear design waste cover in colour to match tray
- Raised Tray version optional with adjustable legs and front panel in colour to match tray. Adds 100mm to height. Recess add £42, Corner add £90 ex VAT
- Available in any colour via RAL or sample matching
- Available without the waste drilled, allowing location of the waste position to avoid a joist. Please add 'W' to the end of the code, e.g. ULL900W, when ordering

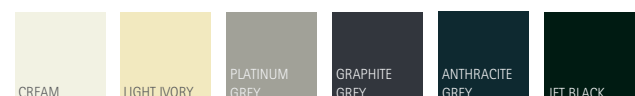


A	B	ULL	PRICE (EX. VAT)	PRICE (INC. VAT)
900	900	ULL900	£289.00	£346.80
1200	800	ULL1280	£324.00	£388.80
1200	900	ULL1290	£346.00	£415.20
1400	800	ULL1480	£375.00	£450.00
1400	900	ULL1490	£394.00	£472.80
1500	900	ULL1590	£448.00	£537.60
1700	900	ULL1790	£474.00	£568.80

Quick Delivery to mainland UK within two days, available on all standard white Continental CL and FL models with Stainless Steel waste. Please clearly state 'Quick Delivery' and place order before midday.

Quick Delivery to Postcodes AB, DD, PA, PH, IV, KW, TD within 3 days of order.

POPULAR COLOUR OPTIONS FOR UNIVERSAL 40, UNIVERSAL LINEAR AND SLATE SHOWER TRAYS

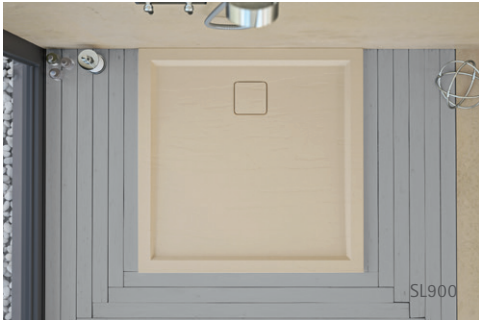


\*\*Not available in Matt White or Pergamon

For waste options please see opposite page



SQUARE & RECTANGULAR SHOWER TRAYS



**FINELINE**

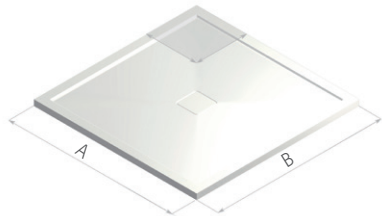
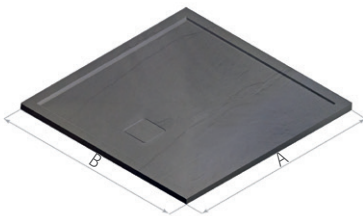
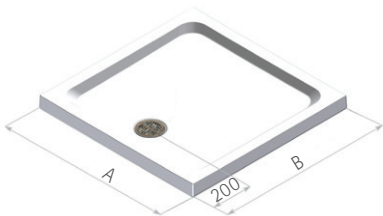
- Medium Profile 60mm, 35mm Raised Threshold
- Stone resin, double acrylic cap
- Supplied with adjustable legs
- Centre front high-flow shower waste with Chrome flange and Stainless Steel grill
- Available in White only
- Optional front panel in white only. Recess add £44, Corner add £78 ex VAT

**SLATE**

- Low Profile 40mm, 10mm+ Raised Threshold
- Stone resin, gel coating
- Centre side shower waste with cover in matching colour
- Raised Tray version optional with adjustable legs and front panel in colour to match tray. Adds 100mm to height. Recess add £50, Corner add £95 ex VAT
- Available in any colour via RAL or sample matching
- Textured finish modelled on real slate
- Certified DIN51097 A Anti Slip

**PREFERENCE**

- Low Profile 30mm-35mm, 10mm Raised Threshold
- Solid surface, semi matt
- Centre shower waste with cover in Preference Material
- Durable and fully restorable surface
- For details on Bespoke Shower Trays see page 101
- Available in White only
- DIN51097 B Anti Slip and PTV 36+ Low Slip Potential



A	B	SN	PRICE (EX. VAT)	PRICE (INC. VAT)
697	697	SN700	£209.00	£250.80
754	754	SN760	£220.00	£264.00
797	797	SN800**	£232.00	£278.40
895	758	SN9076	£245.00	£294.00
895	795	SN9080	£251.00	£301.20
896	896	SN900**	£268.00	£321.60
998	998	SN1000	£317.00	£380.40
1050	796	SN1050	£280.00	£336.00
1200	700	SN1270	£275.00	£330.00
1194	758	SN1276	£299.00	£358.80
1200	797	SN1280**	£308.00	£369.60
1196	898	SN1290	£337.00	£404.40
1505	805	SN1580**	£398.00	£477.60
1500	900	SN1590	£409.00	£490.80
1700	700	SN1770	£393.00	£471.60
1700	800	SN1780	£427.00	£512.40
1700	900	SN1790	£453.00	£543.60
1800	800	SN1880	£462.00	£554.40

A	B	SL	PRICE (EX. VAT)	PRICE (INC. VAT)
905	905	SL900	£347.00	£416.40
1205	805	SL1280	£382.00	£458.40
1205	905	SL1290	£397.00	£476.40
1405	805	SL1480	£442.00	£530.40
1505	805	SL1580	£478.00	£573.60
1502	905	SL1590	£491.00	£589.20
1605	805	SL1680	£498.00	£597.60
1700	905	SL1790	£508.00	£609.60

A	B	MP	PRICE (EX. VAT)	PRICE (INC. VAT)
800	800	MP800	£405.00	£486.00
900	900	MP900	£444.00	£532.80
1000	1000	MP1000	£506.00	£607.20
1200	900	MP1290	£517.00	£620.40
1500	900	MP1590	£618.00	£741.60
*900	900	MP900 MTM	£663.00	£795.60
*1000	1050	MP1000 MTM	£759.00	£910.80
*1350	1050	MP1315 MTM	£894.00	£1,072.80
*1350	1350	MP1350 MTM	£1,079.00	£1,294.80
*1800	1150	MP1800 MTM	£1,202.00	£1,442.40
*2050	1150	MP2000 MTM	£1,236.00	£1,483.20

\*Made to Measure Up to size

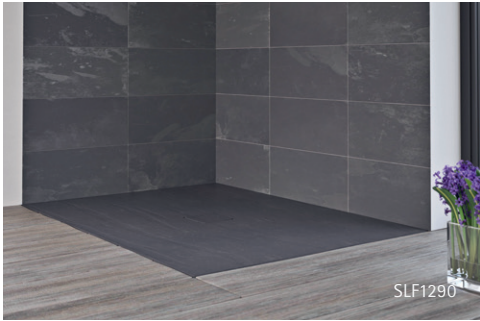
\*\*Available with 10mm tiling upstands , please see [www.matki.co.uk](http://www.matki.co.uk) for further details

WASTE GRILL AND FLANGE OPTIONS FOR CONTINENTAL, UNIVERSAL 40 AND FINELINE:



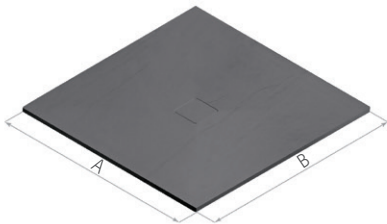
High-flow shower waste with chrome flange and Stainless Steel grill as Standard, see alternative finishes above and quote on order adding a supplement of £32 excluding VAT for these finishes.

SHOWER FLOORS



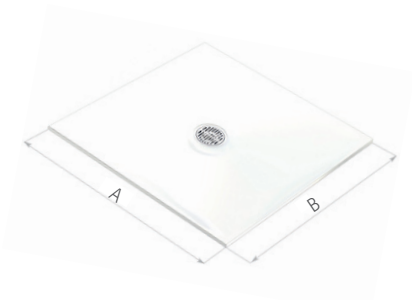
SLATE FLOOR

- Flush to Floor fitting, 38mm Depth
- Stone resin, gel coating
- Centre shower waste with cover in matching colour
- Available in any colour via RAL or sample matching
- Textured finish modelled on real slate
- Certified DIN51097 A Anti Slip
- Choose from 700, 760, 800, 900, 1000 width dimension at same price, please state width required clearly on order. For alternative lengths, widths and waste locations if possible, add £125 ex VAT



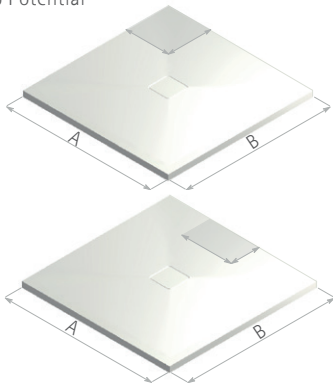
CONTINENTAL 30

- Standard or Flush to Floor fitting, 30mm Depth
- Stone resin, double acrylic cap
- Centre high-flow shower waste with Chrome flange with Stainless Steel grill
- Available in White, Matt White, Black, Pergamon
- Matt White is certified DIN51097 A Anti Slip
- Tiling flange now removed
- Quick Delivery, see page 98



PREFERENCE FLOOR

- Flush to Floor fitting, 20mm-25mm Depth
- Solid surface, semi matt
- Centre shower waste with cover in Preference Material
- Durable and fully restorable surface
- Available in White only
- Fully bespoke shapes up to 2000mm x 1100mm
- Certified DIN51097 B Anti Slip and PTV 36+ Low Slip Potential



A	B	SLF	PRICE (EX. VAT)	PRICE (INC. VAT)
760	700-760	SLF760	£364.00	£436.80
800	700-800	SLF800	£364.00	£436.80
900	700-900	SLF900	£364.00	£436.80
1000	700-1000	SLF1000	£381.00	£457.20
1100	700-1000	SLF1100	£405.00	£486.00
1200	700-1000	SLF1200	£405.00	£486.00
1300	700-1000	SLF1300	£464.00	£556.80
1400	700-1000	SLF1400	£464.00	£556.80
1500	700-1000	SLF1500	£464.00	£556.80
1600	700-1000	SLF1600	£522.00	£626.40
1700	700-1000	SLF1700	£522.00	£626.40
1800	700-1000	SLF1800	£522.00	£626.40
1900	700-1000	SLF1900	£675.00	£810.00
2000	700-1000	SLF2000	£675.00	£810.00

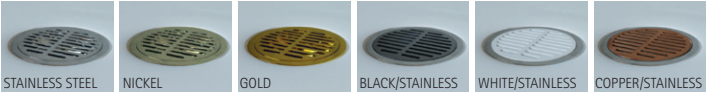
A	B	FL	PRICE (EX. VAT)	PRICE (INC. VAT)
800	800	FL800	£242.00	£290.40
900	800	FL9080	£252.00	£302.40
900	900	FL900	£268.00	£321.60
1200	800	FL1280	£288.00	£345.60
1200	900	FL1290	£297.00	£356.40
1500	900	FL1590	£375.00	£450.00
1700	900	FL1790	£398.00	£477.60

A	B	MF	PRICE (EX. VAT)	PRICE (INC. VAT)
*900	900	MF900 MTM	£444.00	£532.80
*1000	1000	MF1000 MTM	£523.00	£627.60
*1300	1100	MF1310 MTM	£618.00	£741.60
*1300	1300	MF1300 MTM	£860.00	£1,032.00
*1800	1100	MF1800 MTM	£843.00	£1,011.60
*2000	1100	MF2000 MTM	£871.00	£1,045.20

\*Made to Measure Up to size

Matki Shower Floors are designed for a flush, flat to floor appearance. If the showering area is not fully enclosed water may escape the edges of the Matki Shower floor. This should be considered during design and installation in a fully tanked and prepared wet room area.

WASTE GRILL AND FLANGE OPTIONS FOR CONTINENTAL, UNIVERSAL 40 AND FINELINE:

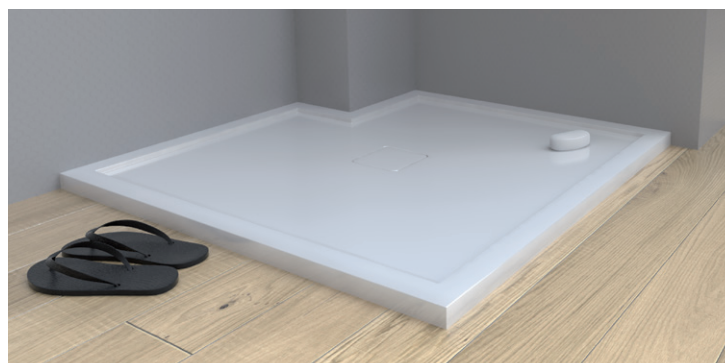


High-flow shower waste with chrome flange and Stainless Steel grill as Standard, see alternative finishes above and quote on order adding a supplement of £32 excluding VAT for these finishes.



## PREFERENCE SHOWER TRAY – MP

- Shapes: Square, Rectangular Angled sides, Quintesse, Curved (standard 550 radius), Cut-outs
- Sizes: Any size up to 2050mm x 1150mm
- Waste location can be moved centrally to avoid joists
- Further details and prices see page 99



## PREFERENCE SHOWER FLOOR – MF

- Shapes: Square, Rectangular Angled sides, Quintesse, Curved (any radius), Cut-outs
- Sizes: Any size up to 2000mm x 1100mm
- Waste location can be repositioned centrally to avoid joists
- Further details and prices see page 100

## SLATE SHOWER FLOOR – SLF

- Shapes: Square, Rectangular
- Sizes: Any size up to 2000mm x 1000mm
- Colour: Any colour in RAL or sample matching
- Waste location can be repositioned centrally dependent on size
- Further details and prices see page 100

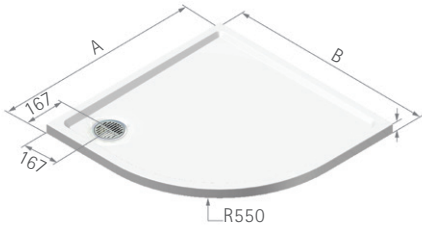


CURVED SHOWER TRAYS



CONTINENTAL 40 CURVED

- 40mm Height, 10mm Raised Threshold
- Stone resin, double acrylic cap
- High-flow shower waste with Chrome flange and Stainless Steel grill as standard
- Raised Tray version optional with adjustable legs and front panel in white only. Adds 100mm to height. Add £90 ex VAT
- Available in White, Matt White, Black, Pergamon
- Matt White is certified DIN51097 A Anti-Slip



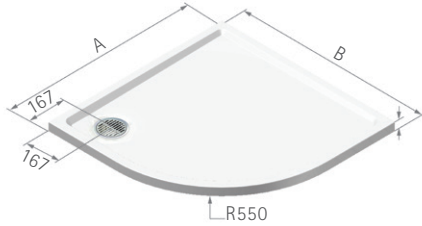
A	B	CLC	PRICE (EX. VAT)	PRICE (INC. VAT)
900	900	CLC900	£345.00	£414.00
900	1000	CLC1090LH**	£362.00	£434.40
1000	900	CLC1090RH	£362.00	£434.40
900	1200	CLC1290LH**	£389.00	£466.80
1200	900	CLC1290RH	£389.00	£466.80
900	1500	CLC1590LH**	£408.00	£489.60
1500	900	CLC1590RH	£408.00	£489.60

\*\* Waste is located in RH corner for this model, other models have waste outlet in LH corner, see illustrations



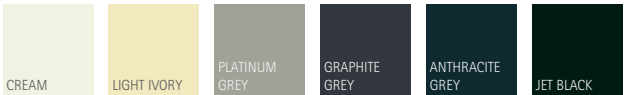
UNIVERSAL 40 CURVED

- 40mm Height, 10mm Raised Threshold
- Stone resin, gel coating
- High-flow shower waste with Chrome flange and Stainless Steel grill as standard
- Raised Tray version optional with adjustable legs and front panel in colour to match tray. Adds 100mm to height. Add £90 ex VAT
- Available in any colour via RAL or sample matching



A	B	ULC	PRICE (EX. VAT)	PRICE (INC. VAT)
900	900	ULC900	£345.00	£414.00
900	1200	ULC1290LH**	£389.00	£466.80
1200	900	ULC1290RH	£389.00	£466.80
900	1500	ULC1590LH**	£408.00	£489.60
1500	900	ULC1590RH	£408.00	£489.60

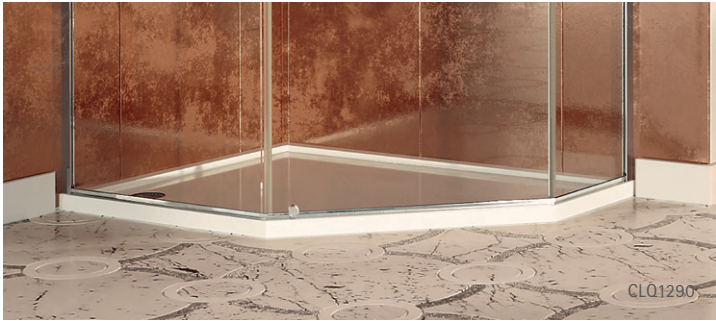
POPULAR COLOUR OPTIONS FOR UNIVERSAL 40 CURVED AND UNIVERSAL 40 QUINTESSE SHOWER TRAYS



For waste options please see opposite page.

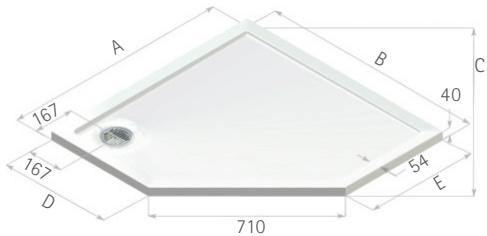


QUINTESSE SHOWER TRAYS



CONTINENTAL 40 QUINTESSE

- 40mm Height, 10mm Raised Threshold
- Stone resin, double acrylic cap
- High-flow shower waste with Chrome flange and Stainless Steel grill as standard
- Raised Tray version optional with adjustable legs and front panel in white only. Adds 100mm to height. Add £85 ex VAT
- Available in White, Matt White, Black, Pergamon
- Matt White is certified DIN51097 A Anti-Slip



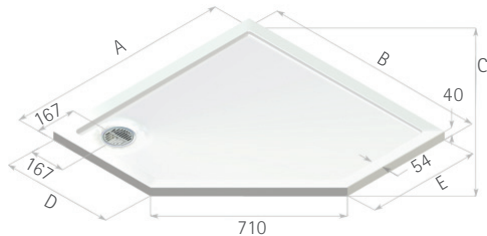
A	B	C	D	E	CLQ	PRICE (EX. VAT)	PRICE (INC. VAT)
900	900	918	398	398	CLQ900	£315.00	£378.00
1000	1000	1058	498	498	CLQ1000	£348.00	£417.60
900	1200	1129	698	398	CLQ1290LH	£350.00	£420.00
1200	900	1129	398	698	CLQ1290RH**	£350.00	£420.00
900	1500	1341	998	398	CLQ1590LH	£382.00	£458.40
1500	900	1341	398	998	CLQ1590RH**	£382.00	£458.40

\*\* Waste is located in RH corner for this model, other models have waste outlet in LH corner, see illustrations



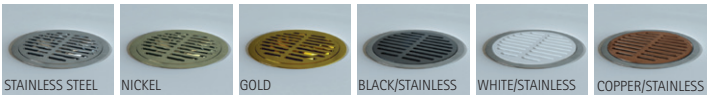
UNIVERSAL 40 QUINTESSE

- 40mm Height, 10mm Raised Threshold
- Stone resin, gel coating
- High-flow shower waste with Chrome flange and Stainless Steel grill as standard
- Raised Tray version optional with adjustable legs and front panel in colour to match tray. Adds 100mm to height. Add £90 ex VAT
- Available in any colour via RAL or sample matching



A	B	C	D	E	ULQ	PRICE (EX. VAT)	PRICE (INC. VAT)
900	900	918	398	398	ULQ900	£315.00	£378.00
1000	1000	1058	498	498	ULQ1000	£348.00	£417.60
900	1200	1129	698	398	ULQ1290LH	£350.00	£420.00
1200	900	1129	398	698	ULQ1290RH**	£350.00	£420.00
900	1500	1341	998	398	ULQ1590LH	£382.00	£458.40
1500	900	1341	398	998	ULQ1590RH**	£382.00	£458.40

WASTE GRILL AND FLANGE OPTIONS FOR CONTINENTAL, UNIVERSAL 40 AND FINELINE:



High-flow shower waste with chrome flange and Stainless Steel grill as Standard, see alternative finishes above and quote on order adding a supplement of £32 excluding VAT for these finishes.

## MATKI SHOWERING GENERAL INFORMATION

EauZone Plus is a luxury collection of Shower Enclosures, Wet Room Panels and Bath Screens in 10mm Safety Glass. It is available in a wide range of standard sizes and in custom, bespoke sizes. Due to the number of options available, it is strongly recommended that you visit a Matki Centre to view a display of the product you are interested in. You can find your nearest Matki Centre by visiting the Where To Buy section on our website and inputting your postcode.

The Matki website also includes an online EauZone Plus Configuration Tool and a Bespoke Section to help you view the whole range of possibilities on offer. If you have any questions please do not hesitate to call us on our Customer Helpline.

All images, finishes and colours featured in this brochure are for representation purposes only. Finishes and colours may vary across materials.

### MATKI 10 YEAR GUARANTEE

Matki shower surrounds and shower trays are covered by a 10-year guarantee against parts failure, with the initial two-year period also having labour cost cover. Gold and Nickel-plated parts and all other special finishes, Teak Decking, the Linear Hardwood Handle and Matki Glass Guard are guaranteed for the initial two-year period only. Matki Elixir and Matki Swadling thermostatic shower mixers and accessories and Matki Fastflow shower wastes are guaranteed for five years. The 10-year Matki guarantee is subject to registration and the issuing of a Guarantee number. It is subject to the terms and conditions stated on the Matki website.

### MATKI GLASS GUARD

Matki Glass Guard is an invisible glass surface coating which helps to reduce limescale and hard water deposits to make cleaning of the glass so much easier.

### WATER SOFTENERS AND GLASS GUARD

Certain types of water softeners increase the alkalinity of the water due to a carry-over of Chloride during re-generation which can cause aggressive water spots on both untreated and Glass Guarded glass. If using a water softener we recommend a two-cylinder machine with automatic re-generation instead of a timer.

If a single-cylinder water softener with timer is already installed it is recommended that after each shower excess water is removed from the glass with a squeegee or with a micro-fibre cloth.

### PRICES

Matki policy is one of continual improvement and we reserve the right to change specification, colour and prices without notice.

### OPTIONAL FEATURES

All Matki handsets and shower heads include an optional 11 litres per minute flow regulator, which will give a more than adequate shower and save water. 9 litres per minute flow regulators are available on request.

Matki PLC, Churchward Road, Yate, Bristol BS37 5PL

Tel: 01454 322 888 Email: [helpline@matki.co.uk](mailto:helpline@matki.co.uk)

[www.matki.co.uk](http://www.matki.co.uk)

Matki Shower Doors, Surrounds, and Trays are produced in accordance with BS EN ISO 9001:2000 Quality Assurance Systems.

Preference, Slate and Continental Matt White are Certified Anti Slip by DIN51097 and PTV standards. See individual product pages.

Matki, Swadling, EauZone, EauZone Plus, ONE, Eleganza, Classica, Colonade, Elixir, Fineline, Illusion, Inswing, Mirage, Quintesse, Radiance and Preference are Registered Trade Marks.

All other Trade Marks featured, applied for. All rights reserved.

Design Rights Reserved: Elixir Hand Shower Duo, Radius-20 Wet Room Panel.

Colonade UK Patent No. GB2289 302.B Design Right and Copyright.

Matki Plc. All rights reserved.

Classica UK Patent No. GB2351299B.

Elixir shower mixer patent applied for.

EauZone Plus Hinge patent no. UK: 2470778.

As part of the continuing policy of product improvement and design, we reserve the right to amend specification, colours and prices without prior notice.

Thank you to artist Mo Welch for her permission to use her licensed artwork 'Deco Girls' on page 15 of this brochure.

Matki continuously develop new products, sizes, ideas and innovations and we recommend that you visit our website [www.matki.co.uk/matki-news](http://www.matki.co.uk/matki-news) for the latest updates.



EC Declaration of Performance tested.  
See [www.matki.co.uk](http://www.matki.co.uk) for details.



BSI certificate number: FM 14200



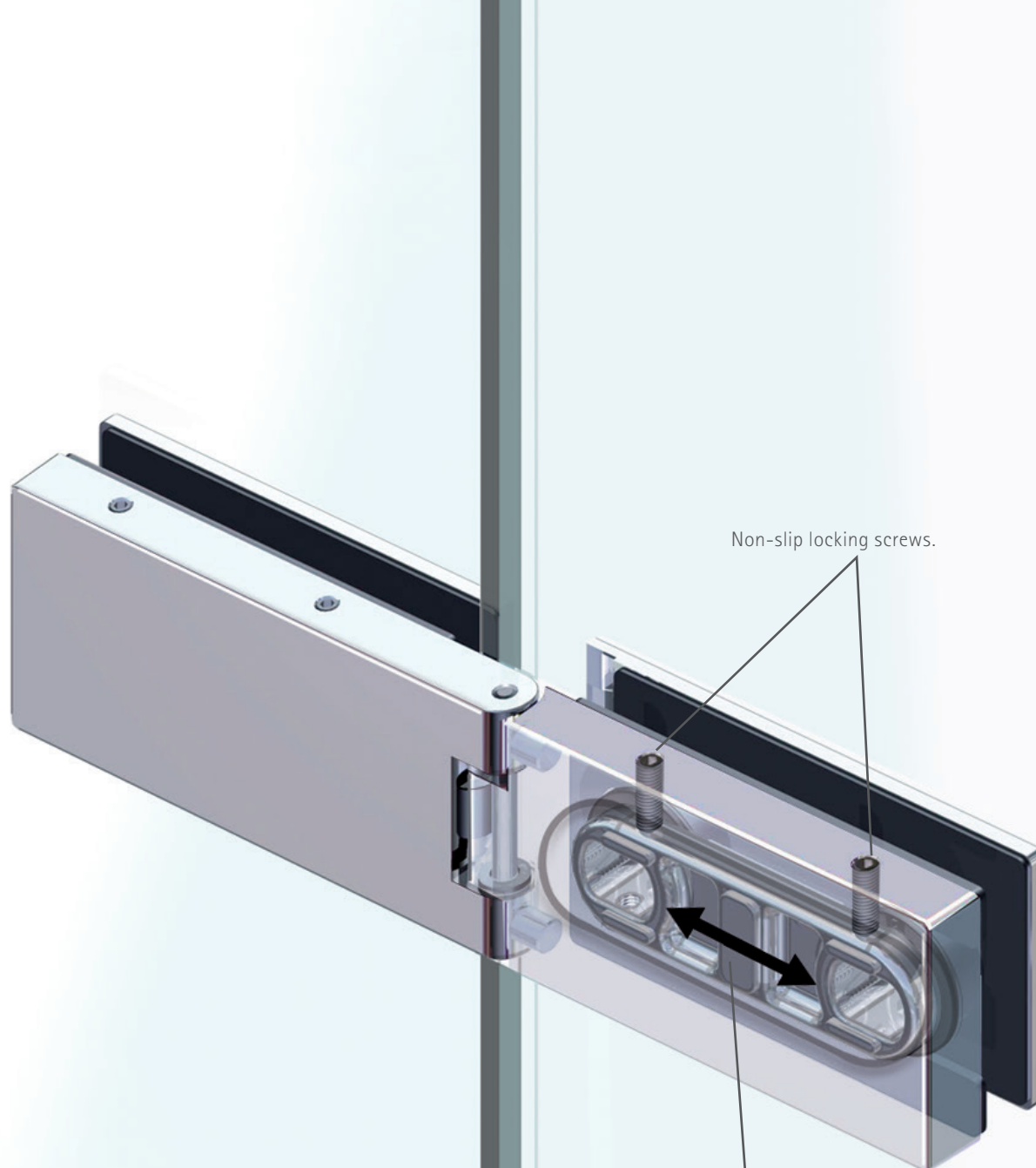
Charity registration number 288701 (England and Wales)  
and SC039479 (Scotland). Supported by the Matki Charity Fund.

**matki**  
10 YEAR GUARANTEE



All Matki shower valves are  
WRAS approved.





Non-slip locking screws.

Unique Brass Hinge Adjustment Block  
for exact door closure adjustment.

# matki

Matki PLC, Churchward Road, Yate, Bristol BS37 5PL

Tel: 01454 322 888 Email: [helpline@matki.co.uk](mailto:helpline@matki.co.uk)

[www.matki.co.uk](http://www.matki.co.uk)

All Matki products are designed  
and produced in the UK

